

**PERTH AND KINROSS COUNCIL**  
**Enterprise and Infrastructure Committee – 20 April 2005**  
**WIND ENERGY POLICY: PREFERRED AREAS**

**Report by the Executive Director (Planning & Transportation)**

This report summarises comments received on the draft Preferred Areas aspect of the Council's wind energy policy and recommends that Preferred Areas be dropped from the Council's wind energy policy and replaced by Broad Areas of Search.

**RECOMMENDATIONS**

The Committee is asked to :

- a) agree to remove the Preferred Areas from its wind energy policy and place these areas into the Broad Area of Search identified in Diagram 1 of the policy.
- (b) instruct the Executive Director (Planning & Transportation) to publish this final Supplementary Planning Guidance incorporating both the policy and guidelines.
- (c) recommend to the Development Control Committee that the final Supplementary Planning Guidance is used as a material consideration in the determination of planning applications for wind energy proposals and in response to Section 36 consultations.
- (d) incorporate the final Supplementary Planning Guidance into Local Plans as appropriate as and when reviewed.

**BACKGROUND**

1. The Committee on 3 March 2004 approved draft wind energy policy and guidelines for consultation. In the light of particular interest at that time from wind farm developers in the Ochils and Southern Highland Perthshire, the Committee also agreed to employ landscape consultants (David Tyldesley Associates) to carry out a 'landscape capacity' study of these areas in particular.
2. The Committee considered representations received on the draft wind energy policy and guidelines at a special meeting on 23 June 2004 and agreed revised policy and guidelines and that the policy be submitted as an Alteration to the Structure Plan. The Committee also approved Preferred Areas taken from the consultant's study conclusions for both The Ochils and Highland Perthshire (centred on Griffin forest and Logiealmond) but requested a refinement of boundaries.

3. A report to the Committee of 1 December 2004 recommended, following extensive discussions with the Scottish Executive, that the wind energy policy be not submitted as an Alteration to the Structure Plan for their approval, since there was every likelihood that Scottish Ministers would change it in ways which would not suit the interests of Perth and Kinross. In agreeing to this approach, it was recognised that this would mean that the public would not have the opportunity to comment on the finalised Preferred Areas through consultation on the Structure Plan Alteration since the Preferred Areas were developed in parallel with the public consultation on the policy guidelines. The Committee therefore agreed that a separate consultation on the Preferred Areas (and associated parts of the policy) be undertaken.

## **PUBLIC CONSULTATION AND RESPONSE**

### **Consultation Process**

4. Public consultation was carried out from 14 January to 11 February 2005 by writing to all those who had previously commented on the policy and guidelines in addition to normal consultees. The consultation document was also placed on the Council's website and is attached as Appendix 1.

### **Public Response**

5. 332 responses were received, broken down into the following categories:

<b>Body</b>	<b>Number</b>
General public	275
Adjoining Planning Authorities	4
Statutory Consultees	4
Community Councils	8
Councillors	1
Developers	8
Other Interested Parties	32

6. Copies of all representations received have been placed in the Councillors' lounge, with the exception of a PowerPoint presentation on CD which can be made available to view on request. The following table provides a very general summary of consultees' views on the Preferred Areas and associated policies: A full list of those who responded is contained in Appendix 2.

<b>Preferred Area</b>	<b>For</b>	<b>Against</b>
Preferred Area 1	1	47
Preferred Area 2	0	1
Preferred Area 3	131*	125**
All Preferred Areas	10	
Other comments		17

\*These are all identical letters wanting Preferred Area 3 extended to include the I&H Brown proposal at Calliachar.

\*\* 87 of these are identical letters and e-mails

7. The majority of comments received about the draft Preferred Areas were critical of them in some way or other and inevitably objectors took the opportunity to criticise the policy more generally; many arguing they did not wish to see wind farms at all, rather than arguing against the Preferred Areas per se. Others took the opportunity to criticise the Council for deciding not to submit the wind energy policy to Scottish Ministers as an Alteration to the Structure Plan. There was also concern expressed about the extent of Sensitive Areas which cover more than National designations. I consider these areas reflect important biodiversity and areas of relative remoteness lacking man-made structures within Perth and Kinross. The most positive support given to the Preferred Areas was that it would provide a mechanism for limiting the number of wind farms in a Preferred Area to one.
8. A significant number of developers argued that the Preferred Areas were too small, whereas many of those opposed to wind farms objected to the principle of them. Significant numbers, including some developers, also felt that the justification for Preferred Areas was weak.
9. There was a strong feeling amongst consultees that the purpose of the study of the Ochils and Southern Highland Perthshire commissioned by David Tyldesley Associates, and reported to the Committee in June, was to undertake an assessment of the capacity of landscape to absorb wind farms in areas where there was interest from developers, rather than to provide the basis for 'Preferred Areas', and that it was inappropriate to use the study for that purpose, particularly since the study concentrated on several small areas rather than the whole of Perth and Kinross, or even the entire Area of Search. In addition, concern was expressed that this study only dealt with landscape and visual aspects (although previous reports have indicated that in general these are likely to be the most contentious issues).
10. In relation to the Ochils draft Preferred Area, developers were also critical of the Tyldesley recommendation that turbines should be limited to 60m in height, since commercial turbines are no longer made to that height and there was also general criticism that views from Gleneagles were given special protection in the policy. The issue of the relationship between the Preferred Area and the Kinross-shire Area of Great Landscape Value, one of the main aims of which is to protect the skyline of the Loch Leven basin from intrusion by wind turbines and other tall structures, was also raised by a number of consultees.
11. In relation to the southern Highland Perthshire Preferred Areas, concern was again expressed that the boundaries of the Griffin area were either too small – and were excluding suitable areas for wind farm development or were too large and thereby impacting on important tourist routes and the adjacent National Scenic Area.

## REVISED PROPOSALS

12. In the light of the considerable volume of comment and criticism received regarding both the principle and detail of the Preferred Areas, it is recommended that the Committee agrees to omit Preferred Areas entirely from its wind energy policy on the grounds that:
1. The thrust of the argument of many objectors that the David Tyldesley study was not prepared primarily to identify Preferred Areas is accepted, as is the observation that the study did not cover the entire Area of Search, although the conclusions of the study are proving helpful in confirming that there may be scope in landscape/visual terms for wind farm developments in these 'pressured' areas and will be a material consideration in dealing with planning applications in these areas.
  2. The remaining policy framework of Sensitive Areas and Broad Area of Search provides a sufficient locational framework within which wind farm proposals can be judged in terms of the detailed guidelines. It is not essential for the policy to have both a strong locational and criteria based policy; in this case the criteria based guidelines are, I believe, robust enough. The draft Preferred Areas should be placed into the Broad Area of Search, where Policy 2 indicates that support for wind energy developments will be given provided they accord with the detailed guidelines.

The removal of Preferred Areas would require:

- An amendment to Diagram One to replace areas currently indicated as Preferred Areas by Broad Area of Search (see Appendix 3)
- An amendment to Wind Energy Policy 2 to take out the criteria associated with Preferred Areas and to include more detailed criteria for assessment of applications within the enlarged Broad Area of Search, most notably compliance with the terms of the Wind Energy Guidelines but including reference to the appropriate scale of turbines taken from the Tyldesley report. A revised text for Policy 2 is given below:

### Revised Wind Energy Policy 2

13. *"In the **Broad Area of Search**, Community and Commercial wind energy developments (see Table 1) will be supported where they would be consistent with the Council's detailed Policy Guidelines and it has been demonstrated that they utilise turbines of a size and a scale appropriate to their location, are in locations least damaging settlements, landscape character, visual amenity, habitats, and will not have unacceptable cumulative impacts.*

*Within the **Strategically Sensitive Areas** there is a presumption against wind energy developments unless it has been demonstrated that they utilise turbines of a size and a scale appropriate to their location, are in locations which will have a slight or no significant impact on settlements, landscape character, visual amenity, habitats, will not have unacceptable cumulative*

*impacts and would be consistent with the Council's detailed Policy Guidelines. Community schemes as defined in Table 2 will be supported where they meet the criteria in the Council's detailed Policy Guidelines.*

*All wind energy proposals should be subject to a detailed environmental assessment covering matters included in the Council's detailed Policy Guidelines."*

## **CONSULTATION**

14. The Chief Executive and Heads of Outdoor Services and Legal Services have been consulted in the preparation of this report.

## **RESOURCE IMPLICATIONS**

15. There are no resource implications arising directly from the recommendations in this report

## **COUNCIL PRIORITIES AND PRINCIPLES**

16. The recommendations within this report support the delivery of the following corporate priorities and corporate principles:

### **Priorities**

- **Community Safety:** working towards creating safer communities in Perth and Kinross
- **Economic Growth:** working towards ensuring Perth and Kinross has a prosperous, sustainable and inclusive economy.
- **Environment :** protecting and enhancing the environment of Perth and Kinross
- **Rural Communities:** supporting rural communities

## Principles

- **Accountability and Transparency:** ensuring that we are accountable and transparent to the community, the Community Planning Partners and the Scottish Executive in our decision-making, planning and delivery of services.
- **Community Involvement:** ensuring that we engage effectively with the community, Community Planning partners and employees regarding our activities and decisions, providing opportunities for participation and feedback
- **Sustainability:** ensuring that we consider the long-term sustainability of our decisions

## CONCLUSION

17. Following extensive public consultation, it is recommended that Preferred Areas are removed from the Council's wind energy policy and the previously designated areas replaced by Area of Search within which proposals will be supported subject to conformity with the detailed wind energy guidelines.
18. The next step is to publish this final Supplementary Planning Guidance and to incorporate it into Local Plans as appropriate as and when they are reviewed. In the interim, the final Supplementary Planning Guidance should be used as a material consideration in the determination of planning applications for wind energy proposals and in response to Section 36 consultations.

J F IRONS  
EXECUTIVE DIRECTOR (PLANNING & TRANSPORTATION)

<b>Contact Officer:</b>	Roland Bean Ext 5303
<b>Address of Service:</b>	Pullar House, 35 Kinnoull Street, Perth, PH1 5GD
<b>Date of Report</b>	20 April 2005
<b>File</b>	S2/8

### NOTE

The following background papers, as defined by Section 50D of the Local Government (Scotland) Act 1973 (and not containing confidential or exempt information) were relied on to a material extent in preparing the above Report; (list papers concerned)

List of correspondence as contained in Appendix 2

**Appendix 1 – Consultation Document Issued January 2005**



Wind Energy Policy and 'Preferred' Areas and  
Supplementary Background Report  
January 2005

# Contents

	<b>Page</b>
<b>Supplementary Background Report</b>	
Introduction	<b>2</b>
Scottish Context	<b>2</b>
National Planning Guidance	<b>2</b>
The Wind Resource in Perth & Kinross	<b>3</b>
Commercial and Community Wind Energy Schemes	<b>3</b>
<b>Wind Energy Policy</b>	
Perth & Kinross Contribution to National Target	<b>5</b>
Strategic Policy on Siting of Wind Energy Developments	<b>5-8</b>

# Supplementary Background Report

## 1 Introduction

- 1.1 There is a widespread consensus on the need to move towards sustainability in energy provision. Renewable energy technologies are diverse and, therefore, have very different effects upon the local environment. In Perth and Kinross, the renewable energy technologies that offer the greatest potential, at least in the short term, in addition to the existing large-scale hydro schemes, are wind energy, small-scale hydro and the use of forest residues.
- 1.2 Modern wind energy technologies and developments offer opportunities in supporting and developing the economy of Perth and Kinross to the benefit of its residents. However, the development of wind farms, especially on a large scale, may have significant local impacts on the environment. There is a need therefore, to examine the balance between the benefits and disadvantages of wind energy development. The purpose of this policy and guidance note is to enable the wind energy industry to expand, but not at the cost of the natural and built environment.

## 2 Scottish Context

- 2.1 The Scottish Executive supports the development of renewable energy as an integral part of the UK Government's climate change programme and to make an equitable contribution to the UK's obligation to reduce greenhouse gas emissions under the Kyoto Protocol. The UK target for electricity generation from renewable energy generation is 10% by 2010. The Scottish Executive's comparable target of 18% electricity generation from renewable energy sources by 2010, while seemingly higher, includes the contribution made by existing large-scale hydro schemes.
- 2.2 The Scottish Executive expects established technologies such as on-shore wind and hydro to play a major part in achieving the 18% target by 2010. Beyond that target, the Scottish Executive has an aspirational target of 40% of Scotland's electricity generated from renewable sources by 2020. However, it is of the view that the cumulative impacts of on-shore wind farms, coupled with the scarcity of suitable remaining sites for large-scale hydro, make it unlikely that Scotland could achieve this target on these technologies alone. Instead, it considers that if Scotland is to exploit its renewable energy future to the full, there is a need to promote the development of new technologies such as off-shore wind, biomass, wave and tidal power.

## 3 National Planning Guidance

- 3.1 Scottish Executive Planning Guidance is given in NPPG 6 – Renewable Energy Developments published in late 2000. This seeks to ensure that the planning system *“plays a full part by making positive provision for such developments”*, and importantly ensures that *“development control decisions are taken efficiently, consistent with national and international climate change policy commitments and obligations”*, while at the same time ensuring that the environment and local communities are protected from inappropriate developments in inappropriate locations.

3.2 With regard to wind energy developments, NPPG 6 recognises that the following issues need to be considered and where appropriate addressed. These relate to:

- Visual impact
- Landscape
- Birds and habitats
- Other considerations (these are dealt with in more detail in PAN 45 - Renewable Energy Technologies)

3.3 NPPG 6 also makes it clear that the Development Plan should set out the criteria against which developments will be assessed. This can also include guidance on a broad area of search where wind energy developments are likely to be permitted.

#### **4 The Wind Resource in Perth & Kinross**

4.1 The UK has one of the windiest climates in Europe, and it has been calculated that wind energy could theoretically supply more energy than the current UK demand for electricity. However, for practical reasons this resource could not all be exploited. Significant areas of Perth & Kinross have mean annual wind speeds in excess of 7 metres per second (m/s), which is considered suitable for commercial wind energy generation. Less windy areas may become commercially attractive in the future but are currently attractive only to smaller schemes for community or individual use.

4.2 The wind resource was modelled at a resolution of 1km<sup>2</sup>, 'cell' forming the unit of analysis. While not a definitive guide to the wind resource of the area, it gives a reasonable indication to those areas likely to be of most interest to developers. The wind speeds are notional averages for each 1 km square – in practice there are likely to be significant differences in wind speed within any one square. From this it is estimated that some 2798km<sup>2</sup> (around 50%) of Perth and Kinross has a wind speed greater than 7m/s and gives the 'technical' resource. However, the area available is reduced by the application of a number of technical, environmental and social constraints. With the constrained areas removed it is estimated that the available area remaining is some 757km<sup>2</sup> or some 14% of the land area of Perth and Kinross.

#### **5 Commercial and Community Wind Energy Schemes**

5.1 Wind energy proposals vary considerably from single, small turbines to major wind farms covering several square kilometres. There is an important distinction to be made between developments that are primarily intended to service a local demand or need (e.g. for an individual household, farm, business, institution or community co-operative) and those that are primarily intended to supply electricity to the national distribution network – and meet the Executive's renewable energy targets. Although there is no mechanism in planning law to distinguish between types of development on the basis of who it is for, or to whom it belongs, in practice, the different scales of these proposals allow a distinction to be made in terms of planning policy; generally, it is expected that proposals for local users will be for small-scale schemes (in terms of numbers, size of turbines and output), which are likely to be much more

acceptable visually, even in areas which may be sensitive to large wind farms. This is in line with the Structure Plan Environment and Resources Policy 14 which gives specific support to community based renewable energy schemes. However, it is accepted that there will also be schemes which are largely 'commercial' in nature but may have community involvement through an equity stake or even a number of large turbines being owned by the community but part of a commercial development

- 5.2 Locally owned wind turbines, whether as individual installations or as clusters, offer communities, co-operatives, small businesses and families the opportunity to harness the wind, and thereby generate electricity, protect the environment and stimulate the local economy. Community based wind clusters can therefore provide a good rural development tool as they can help alleviate fuel poverty when combined with affordable housing schemes, provide an extra source of income which is particularly significant in rural areas and provide some employment opportunities.

## **Wind Energy Policy and 'Preferred' Areas**

### **Perth & Kinross Contribution to National Target**

- 6.1 The Council wishes to contribute to the Scottish Executive's target of providing 40% of Scotland's electricity from renewable sources provided that the impact on amenity, landscape, archaeology, habitats is managed by ensuring the most sensitive locations are avoided; nonetheless, it recognises that the most significant constraint on development is the landscape or visual impact of proposals and does not propose an absolute ceiling on wind energy generating capacity in Perth & Kinross unless there are major impacts on landscape character.
- 6.2 The Council recognises that the 2020 target is an ambitious one and that its policy guidance will need to be kept under review as new renewable energy schemes and other renewable energy technologies come forward. Accordingly:

### **Wind Energy Policy 1**

*The Council will encourage the development of commercial wind energy schemes which assist in achieving the Scottish Executive's target of electricity generated from renewable sources by 2010 and also community wind energy schemes to provide local electricity needs in locations least damaging to landscape character, amenity, habitats, and species in Perth & Kinross as shown in Diagram 1. In the period to 2010, the Council will look favourably on those schemes within the 'Preferred Areas' and in the 'Broad Area of Search' which meet the criteria set out in the Council's Wind Energy Policy Guidelines.*

*The Council will work, in conjunction with public agencies and the private sector, to ensure that Perth and Kinross makes an appropriate contribution to meeting the Scottish Executive's 40% aspirational target of electricity generated from all renewable sources by 2020. The contribution to be made in Perth and Kinross to this target will be subject to a later review as wind energy schemes are implemented and other technologies come forward*

- 6.3 The policy makes a distinction between two types of wind energy development which require different policy responses; **community schemes** and **commercial schemes**. The classification below is used within the following policy:-

**Table 1: Scale of development**

<b>Type</b>	<b>Scale</b>	<b>Example</b>
<b>Community</b>	Domestic	single small turbine (typically up to 7m to hub height, and blade diameter of 4 m)
	Single	Single 'standard' turbine (typically more than 20m to hub height and blade diameter more than 20m)
	Cluster	2-5 turbines (typically no more than 30m from ground to blade tip) in a single installation
<b>Commercial</b>	Cluster	2-5 turbines (up to 120m from ground to blade tip) in a single installation
	Wind Farm	6 or more turbines (up to 120m from ground to blade tip) in a single installation

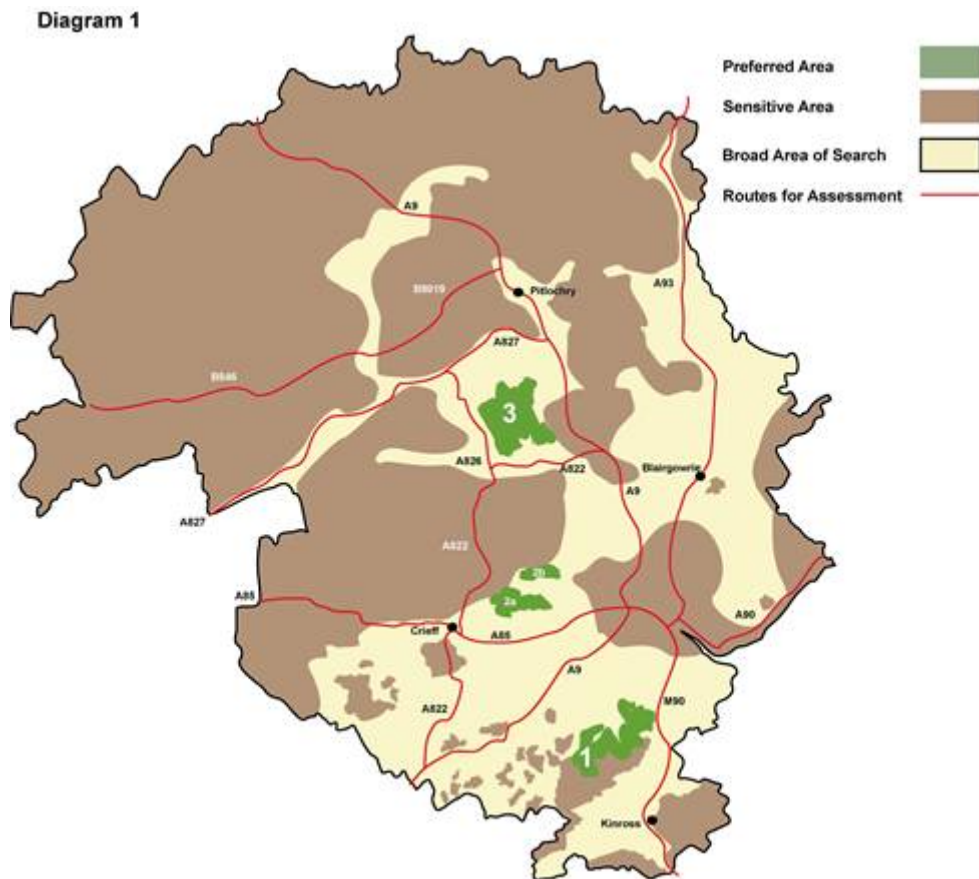
## **Locational Policy**

- 6.4 The Preferred Areas and Broad Areas of Search shown in Diagram 1 should be used in conjunction with the Council's Supplementary Planning Guidance on Wind Energy Developments. Policy 2 below gives an indication of the type(s) of wind energy developments that may be acceptable within the Preferred Areas and the Broad Area of Search. It should be emphasised that this does not mean that any development will be acceptable at any given location and that there may be suitable sites within the Sensitive Area. Table 2 shows the 'sensitivities' used to define the Strategically Sensitive Area.

**Table 2: Sensitivities Used to Define Strategically Sensitive Areas**

Interest	Sensitivity
Landscape	National Scenic Areas, Historic Gardens and Designed Landscapes, Perth Green Belt, Areas of Great Landscape Value,
Biodiversity	Natura 2000 Sites, Ramsar Sites, National Nature Reserves, Sites of Special Scientific Interest, Annex I Habitats (active raised bogs, blanket bog, degraded raised bogs Upland Heath, Montane (key habitats from Tayside Biodiversity Action Plan)
Aviation	Airport consultation zones, communication, navigation and surveillance (CNS) systems consultation zones

**Diagram 1**



*Based upon Ordnance Survey mapping with the permission of the Controller of HMSO Crown Copyright Reserved. Reproduction infringes Crown Copyright and may lead to prosecution or civil proceedings. Licence No 100013289*

6.5 Amongst the key habitats identified in the Tayside Biodiversity Action Plan are Upland Heath and Montane (habitats above the tree line) which contain extensive areas of peat bog. As well as being sensitive habitats in their own right, these areas are carbon sinks and also

represent some of Perth and Kinross' more remote and wild parts where any built development would be an intrusion into the area where there are few human-made structures. Accordingly:

### **Wind Energy Policy 2**

*Commercial and community wind energy developments (see Table 1) will be supported in 'Preferred Areas' 1-3.*

*In **Area 1** (the Ochils) only one wind farm will be acceptable and only where it fully meets the following criteria:*

- a) would utilise as small a turbine size as possible, (no more than 60 metres to blade tip);*
- b) would be set out in as compact a layout as possible;*
- c) would utilise the topography to 'nestle' the turbines into landform, maximising the opportunity to site turbines against a backdrop of higher land;*
- d) would be located in a configuration that minimises the impact on the skyline from views from the north and south of the hills;*
- e) would not detract from the setting of, or adversely affects the views from the Gleneagles golf course / hotel area;*
- f) would otherwise be consistent with national and local landscape and visual amenity policies;*
- g) would be subject to a fully detailed landscape and visual impact assessment that is taken into account in the determination of the application; and*
- h) would adopt all mitigation measures to achieve the best landscape fit and to minimise impacts on visual amenity even at the expense of reducing turbine numbers.*

*In **Areas 2 and 3** proposals for Community and Commercial wind energy developments (see Table 1), will be acceptable where:*

- a) all mitigation measures are taken to achieve the best landscape fit and to minimise impacts on visual amenity even at the expense of reducing turbine numbers;*
- b) to avoid unacceptable cumulative impact no more than one wind farm will be permitted within each area identified in Diagram 1; and*
- c) there is a minimum of 10 kilometres separation distance between any two windfarms*
- d) in all other ways, would be consistent with the Council's detailed Policy Guidelines*

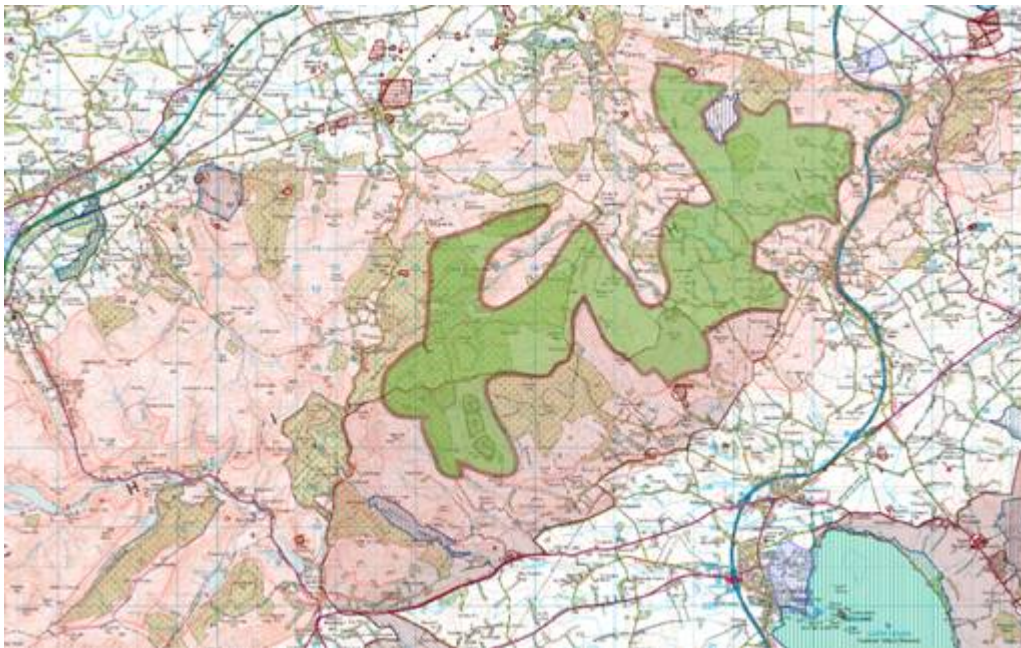
*In the remaining **Areas of Search** Community and Commercial wind energy developments (see Table 1) will be supported where it has been demonstrated that they will be in locations least damaging to landscape character, visual amenity, habitats and will not have an unacceptable cumulative impact that would result in the Preferred Areas not being developed and would be consistent with the Council's detailed Policy Guidelines.*

*Within the **Strategically Sensitive Area** wind energy developments will normally be limited to community schemes as defined in Table 2. There is a presumption against unless it has been demonstrated that they will be in locations which do not damage landscape character, visual amenity, habitats and will not have an unacceptable cumulative impact that would result in the Preferred Areas not being developed and would be consistent with the Council's detailed Policy Guidelines.*

## Preferred Areas in Detail

6.6 Diagram 1 only establishes the principle that an individual wind energy proposal may be acceptable within the Preferred Areas and Strategic Areas of Search. It will still be necessary to consider the proposal at the chosen location against the detailed guidance below and whether there may be any cumulative impact with other proposals. The maps on the following page show Areas 1-3 (highlighted in green) in more detail together with statutorily designated sites in their immediate vicinity.

### Area 1 – The Ochils



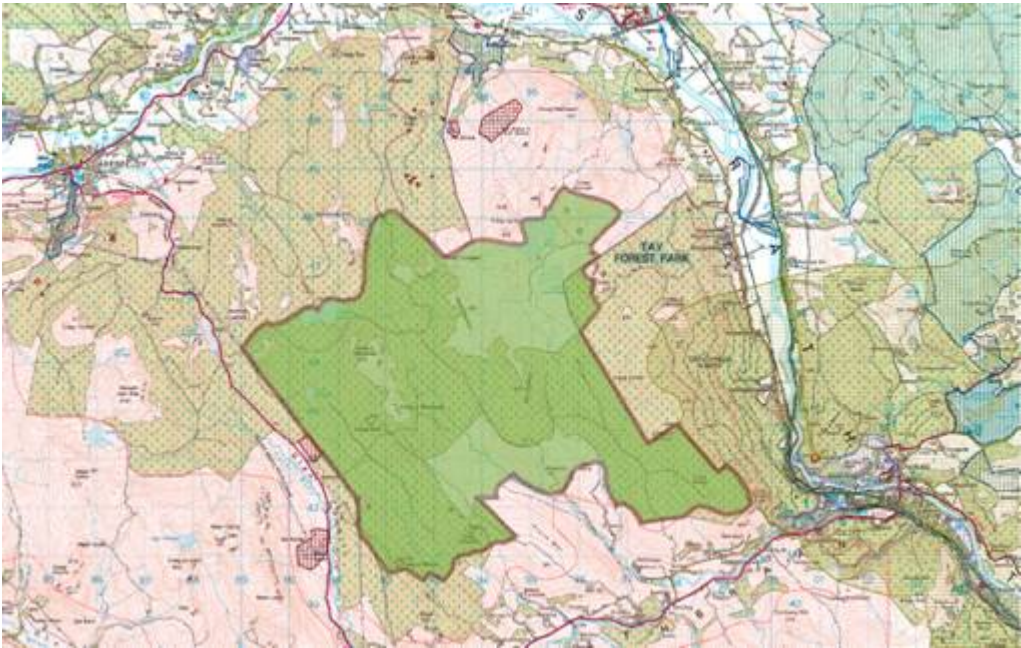
*Based upon Ordnance Survey mapping with the permission of the Controller of HMSO Crown Copyright Reserved. Reproduction infringes Crown Copyright and may lead to prosecution or civil proceedings. Licence No 100013289*

## ***Area 2 – Logiealmond***



*Based upon Ordnance Survey mapping with the permission of the Controller of HMSO Crown Copyright Reserved. Reproduction infringes Crown Copyright and may lead to prosecution or civil proceedings. Licence No 100013289*

**Area 3 – Southern Highland Perthshire**



*Based upon Ordnance Survey mapping with the permission of the Controller of HMSO Crown Copyright Reserved. Reproduction infringes Crown Copyright and may lead to prosecution or civil proceedings. Licence No 100013289*

## **Appendix 2**

<b>Organisation</b>	<b>Name</b>
<b><i>Adjoining planning authority</i></b>	
Cairngorms National Park Authority	
Clackmannanshire Council	
Dundee City Council	
Stirling Council	
<b><i>Statutory consultee</i></b>	
Forestry Commission Scotland	
Royal Fine Art Commission for Scotland	
Scottish Environment Protection Agency	
Scottish Natural Heritage	
<b><i>Agents for developers or other interested parties</i></b>	
BWEA	
Anderson Beaton Lamond	
Terence O' Rourke	
Managed Estates	
Thom Bell Ltd	
Culfargie Estates	
Finning UK	
Scottish Renewables Forum	
RPS Planning	
<b><i>Developers</i></b>	
AMEC Project Investments Limited	
Bond Pearce	
GreenPower	
I&H Brown	
Lomond Energy	
npower Renewables	
Scottish & Southern Energy	
West Coast Energy Ltd	
<b><i>Community Councils</i></b>	
Dunkeld and Birnam Community Council	
Glenfarg Community Council	
Kenmore & District Community Council	
Methven & District Community Council	
<b><i>Other interested parties</i></b>	
ASWAG	Ms Taylor
DCA Consultants Ltd	Mr Antia
Dunkeld & Birnam District Leisure Group	Mr Wylie
Dunning Environment Protection Group	Dr Wood
Earn Community Council	Mr Johnston
Fisheries Research Services	Mr Beverage
Foldback Media Limited	Mr Aylott
Friends of the Ochils	Mr Prentice

<b>Organisation</b>	<b>Name</b>
General Aviation Awareness Council	Ms Bloomfield
Perth & Kinross Council	Councillor Barnacle
Perthshire Tourist Board	Mr Ritchie
Save our Scenery Association	Mr Gordon
Windfarm Awareness Group	Ms Rowlands
Woodland Trust (Scotland)	Ms Pigot
<b>Individuals</b>	
<b>Name</b>	<b>Name</b>
Ms Adam	Mr & Mrs Bryson
Mr Allan	Mr Butterfield
Ms Allan	Mr Cameron
Mr Allan	Ms Campbell
Ms Allison	Ms Campbell
Mr Allison	Ms Campbell
Mr Anderson	Ms Campbell
Ms Anderson	Dr Carr
Ms Anderson	Mr Carr
Ms Angus	Ms Chambers
Ms Angus	Ms Chambers
Ms Angus	Mr Cockburn
Mr Angus	Mrs Cockburn
Ms Angus	Ms Collins
Mr Ayling	Ms Collins
Mr Barbour	Mr Conway
Mr Barbour	Mr Cowan
Mrs Batchford	Ms Craik
Mr Batchford	Ms Craik
Mr & Mrs Bell	Ms Craik
Mr Birkett	Mr Craigie
Mr Borland	Mrs Crichton
Mr Borrowman	Mr Davidson
Mr Borthwick	Mr Davidson
Mr Bradley	Ms Devitt
Ms Brookes	Mr Donaldson
Mr Brown	Mr Douglas
Mr Brown	Mr Eddington
Mrs Brown	Mrs Evans
Ms Brown	Mr Evans
Mrs Brown	Mr Farmer
Mr Brown	Ms Fellowes
Mr Bruce	Mr Ferguson
Mr Bruce	Mr Ferguson
Mr Bryce	Mrs Fielding
Mr Bryce	Mr Fieldsend
Mr Bryce	Ms Fieldsend
Mr Bryce	Mr Fieldsend
Ms Bryce	Mr Irvin
Mr Finlay	Ms Jack
Mr Fiskin	Mrs Jack

Name	Name
Ms Fitzpatrick	Mr Flint
Mr Bryce	Ms Flint
Mr Flint	Ms Jamieson
Ms Forbes	Mr Jamieson
Ms Fordyce	Mrs Jamieson
Mr Forsyth	Mr Jamieson
Mrs Fotheringham	Mr Johnston
Mr Fretz	Mr Kaye
Mr Fuller	Ms Kaye
Ms Fuller	Ms Kennedy
Ms Gamble	Ms Kennedy
Mr Gamble	Mr Kennedy
Mrs Gibson	Ms Kennedy
Mr Gibson	Mr Kennedy
Mr Gilbert	Mr & Mrs Kerr
Mr Girvan	Mr Kerron
Mr Goodfellow	Mr Kettles
Mr Gordon	Mr Koronka
Ms Grant	Mr Koronka
Mr Grave	Mr Lambert
Ms Grave	Mr Le Roy-Lewis
Ms Greenwald	Mr Le Roy-Lewis
Ms Grieve	Ms Le Roy-Lewis
Mr Grieve	Ms Le Roy-Lewis
Mr Grieve	Ms Leggeat
Mr Grieve	Mr Leggeat
Mr Haldane	Mr Lewis
Mr Hall	Ms Lindsay
Ms Halley	Ms Lindsay
Mrs Hancock	Dr Lindsay
Mr Hancock	Mr Lindsay
Mrs Harunsyah Grieve	Sir Ian Lawson
Ms Hebblethaitte	Ms Lawson
Mr & Mrs Hessey	Mrs MacDonald
Mr Hewines	Mr & Mrs Bell
Mrs Hill	MacDougall
Ms Hodges	Ms MacGregor
Ms Hoskinson	Mr MacGregor
Mr Hughan	Mr Mackie
Mrs Hughan	Ms MacKinnon
Mrs Hughan	Mrs Maclean
Mr Hutcheson	Mrs Maclean
Mr Imrie	Mr MacPherson
Ms Irvin	Ms Mallet
Mr Irvin	Mr Maw
Mr Irvin	Mr McCheyne
Mr McDonald	Mr & Mrs Redfern
Mr McFarlane	Mr Reilly
Mr McFarlane	Mr Richardson
Ms McFarlane	Mr McKillop
Mr McGregor	Mrs McKillop

Mr Jack	Mr McKillop
Mr Jack	Ms McKillop
<b>Name</b>	<b>Name</b>
Mr McLagan	Mr Robertson
Ms McNay	Ms Ross
Mr McWilliam	Mr Ross
Mr McWilliam	Mr Ross
Mr McWilliam	Ms Rowlands
Ms Menzies	Mr Rowlands
Ms Mercer	Ms Luff
Wg Cdr Mickleburgh	Ms Scott
Mr Millar	Mrs Scott
Ms Millar	Mr Scott
Mrs Miller	Mr Scott
Ms Mitchell	Ms Seibicke
Ms Morse	Ms Shedden
Ms Mouat	Dr Shedden
Mr Mouat	Mr Sloan
Mr Neilson	Mr Smith
Mr Nicholls	Mr Smith
Mr Nicoll	Mr Smith
Mr Nicoll	Mr Smith
Ms Noble	Ms Smythe
Ms Noble	Mr Starkey
Mr Noble	Ms Stevenson
Mr Noble	Mr & Mrs Stewart
Mr O'Brien	Ms Straker
Ms Orange	Mr Strong
Mr Owens	Mr Stroyan
Ms Page	Mr Sutherland
Mr Pass	Mr Sutherland
Mr Paul	Mr Thomson
Mr Paul	Mr Thomson
Mr Payne	Ms Thomson
Mr Penney	Ms Thomson
Mr Philpott	Mr Thomson
Ms Philpott	Ms Thorne
Ms Philpott	Mr & Mrs Thornley
Mr Philpott	Ms Todd
Mr Pleasance	Mr Trail
Ms Poole	Mr Tucker
Mr Prentice	Mr Tudor-Morgan
Mr Quartermaine	Mr Violet
Mr Wailes	Ms Whytock
Mr Wailes	Mr Williamson
Ms Wailes	Ms Wilson
Mr Wallendahl	Mr Wilton
Mr Warde-Norbury	Mr Wiseman
Mr Warde-Norbury	Ms Wood
Ms Whittingham	Mr & Mrs Worrell
Ms Richardson	Mr Young
Ms Ritchie	Mr Young

Ms Robertson	Mrs Young
Mr Robertson	