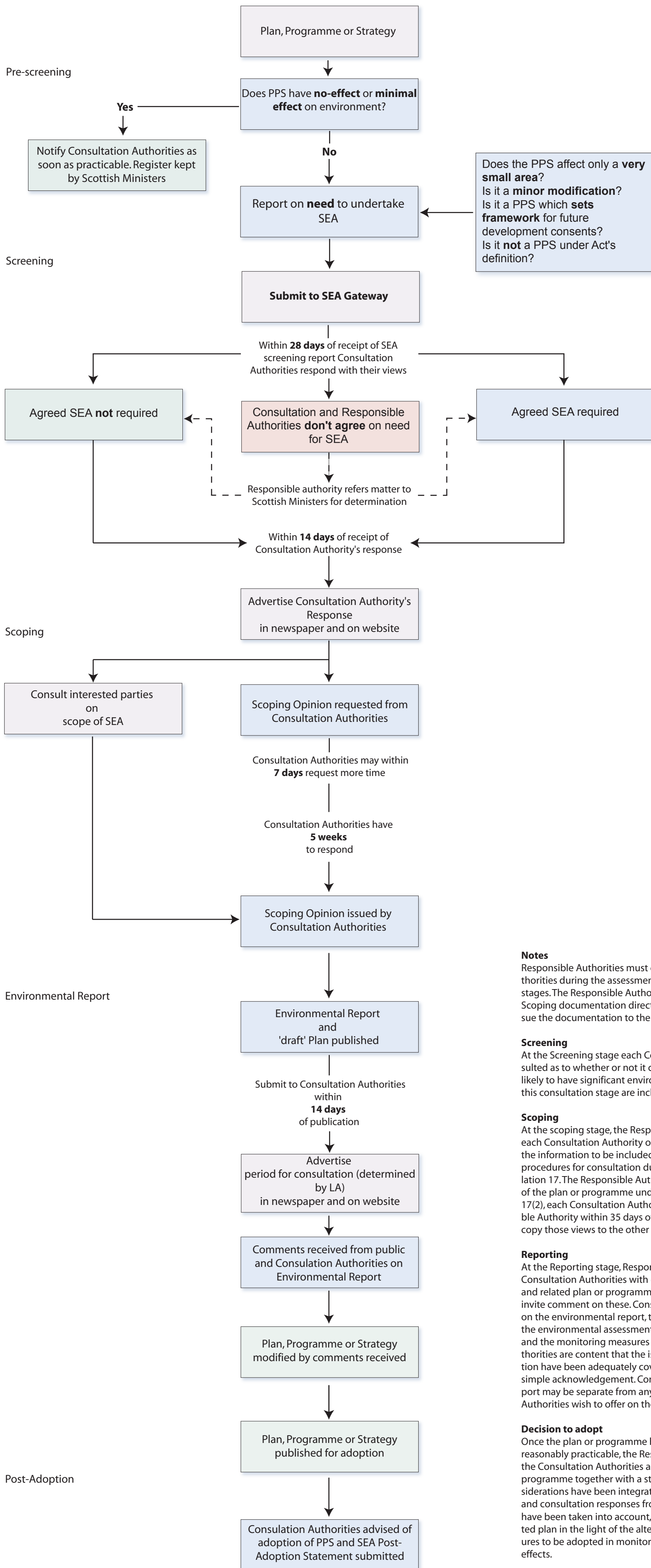


SEA Process



Notes
Responsible Authorities must consult with the Consultation Authorities during the assessment process at each of the following stages. The Responsible Authority should pass the Screening or Scoping documentation directly to the SEA Team who will then issue the documentation to the Consultation Authorities.

Screening
At the Screening stage each Consultation Authority must be consulted as to whether or not it considers the plan or programme is likely to have significant environmental effects. The procedures for this consultation stage are included in Regulation 14.

Scoping
At the scoping stage, the Responsible Authority must consult with each Consultation Authority on the scope and level of details of the information to be included in the environmental report. The procedures for consultation during scoping are included in Regulation 17. The Responsible Authority shall provide sufficient details of the plan or programme under consideration. Under Regulation 17(2), each Consultation Authority shall respond to the Responsible Authority within 35 days of receiving this information and shall copy those views to the other Consultation Authorities.

Reporting
At the Reporting stage, Responsible Authorities should provide Consultation Authorities with copies of the environmental report and related plan or programme within 14 days of completion and invite comment on these. Consultation Authorities may comment on the environmental report, the adequacies and implications of the environmental assessment, the effects of mitigation measures and the monitoring measures proposed. Where Consultation Authorities are content that the issues raised in the scoping consultation have been adequately covered, this may take the form of a simple acknowledgement. Comments on the environmental report may be separate from any comments that the Consultation Authorities wish to offer on the proposed plan or programme.

Decision to adopt
Once the plan or programme has been adopted and as soon as is reasonably practicable, the Responsible Authorities should inform the Consultation Authorities and forward a copy of the plan or programme together with a statement of how environmental considerations have been integrated, how the environmental report and consultation responses from the Consultation Authorities have been taken into account, the reason for choosing the adopted plan in the light of the alternatives considered and the measures to be adopted in monitoring the significant environmental effects.