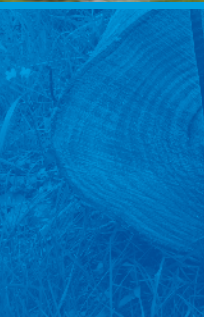




Blackwater Outdoor Centre



The centre offers an ideal base for school, youth or adult groups wishing to use spectacular local landscapes for environmental or outdoor education, field studies, recreational or sporting activities. Excellent mountain and water resources are within easy reach.



This self-catering centre has had extensive modernisation work completed during 2005/2006 and is well furnished and equipped.



The centre is a converted schoolhouse situated alongside the A93 (OS Grid Ref. 144594) 8 miles North of Blairgowrie and close to the Glenshee ski centre. Pitlochry is 17 miles to the West. Bridge of Cally is 6 miles to the South.

Accommodation



Sleeping capacity 18

- 3 rooms (sleep 4 each)
- 1 room (sleeps 3)
with en suite disabled toilet and shower
- 1 room (sleeps 2)
- 1 room (sleeps 1)
- 2 large shower and toilet rooms (male and female) are located on the ground floor

The kitchen is equipped with electric cooker, refrigerator/freezer, washing machine, cooking utensils and kitchen accessories. Crockery, cutlery, bed-linen (duvets, sheets and pillowcases) are provided but groups must supply their own food, washing up liquid and tea towels.

A dining room next to the kitchen seats 20.

The centre has a large comfortably furnished living room.

There is an external drying room and storage area for equipment such as bikes and skis.

A coin operated telephone is located within the centre (01250 882233).