

PERTH AND KINROSS COUNCIL**Lifelong Learning Committee – 20 August 2008****STATUTORY CONSULTATION – GLENEARN CAMPUS****Report by Executive Director (Education and Children's Services)****ABSTRACT**

This report outlines the issues arising from the statutory consultation undertaken on the redelineation of the existing Caledonian Road, Moncreiffe and Craigie Primary Schools' catchment areas as a result of the approval of Committee Report 08/14 in January 2008.

1 RECOMMENDATIONS

It is recommended that the Committee:

- (i) notes the issues raised during the statutory consultation exercise;
- (ii) approves the proposed catchment areas outlined in Appendix No.2 to be effective from Session 2009/2010; and
- (iii) authorises the Executive Director (Education and Children's Services) to manage the Perth and Kinross Council Admissions Policy to provide guaranteed places where requested, where possible, for younger siblings of any existing Craigie Primary School pupils no longer in the revised Craigie Primary School catchment area to attend Craigie Primary School.

2 BACKGROUND

- 2.1 At the Lifelong Learning Committee meeting of 16 January 2008 (Report No 08/14 refers) it was agreed that formal consultations take place regarding the redelineation of the existing Caledonian Road, Moncreiffe and Craigie Primary Schools' catchment areas.
- 2.2 The Executive Director was instructed to report back to Lifelong Learning Committee on the outcome of the statutory consultation exercise.

- 2.3 In terms of Schedule 1 of the Education (Publication and Consultation etc) (Scotland) Regulations 1981, as amended in 1987, 1988 and 1989, Perth and Kinross Council formally embarked upon consultations with regard to the following proposal: **proposed options for the redelineation of the existing primary school catchment areas for Caledonian Road, Moncreiffe and Craigie Primary Schools' and the catchment area for Inch View Nursery and Primary School.**
- 2.4 The consultation options were as listed within Appendix 1.
- 2.5 In terms of the above Statutory Instrument, the following consultation arrangements were put in place:
- 2.5.1 An individual letter outlining the proposal was issued to all parents/guardians of every school and nursery pupil currently in attendance at Caledonian Road, Moncreiffe and Craigie Primary Schools and Friarton Nursery.
- 2.5.2 A letter outlining the proposal was sent to the Parent Councils of the 4 schools.
- 2.5.3 A letter outlining the proposal was sent to the Headteachers of the 4 schools.
- 2.5.4 Public Notice advertisements were placed in the Courier and Perthshire Advertiser outlining the proposal and the date/time/venue of the public meetings held to discuss the proposal.
- 2.5.5 Two public meetings were held on 11 June 2008 in the Grampian Hotel, Perth for parents of Friarton Nursery, Caledonian Road, Moncreiffe and Craigie Primary Schools to explain the proposal and listen to the views of parents and the wider community.
- 2.5.6 Posters were issued to all 4 schools and private/partner provider nurseries in Perth City to be displayed for any interested parents.
- 2.5.7 All relevant information, including maps of all the proposed options, was posted on the internet.
- 2.6 The Authority was represented at the above public meetings for the purposes of explaining the proposal, discussing each option in detail and taking account of the representations made at the meeting.
- 2.7 The closing date for further representation was Friday 11 July 2008.
- 2.8 The public meeting was open to parents, as well as the wider community and was chaired by Chris Webb, Head of Education Services. In addition, officers from Education and Children's Services attended to provide additional input and support as required.

3 SUMMARY OF ISSUES

- 3.1 45 people attended the public meetings in The Grampian Hotel, Perth on Wednesday 11 June 2008 and there was a positive response in general to the proposal.
- 3.2 The meetings reflected on:
- (i) the pros and cons of operating existing joint catchment areas
 - (ii) the impact a joint catchment area would have on pupils living in rural areas
 - (iii) timescales for parents being advised if their request to register their child had been successful
 - (iv) current and future capacity issues at Craigie Primary School
 - (v) concerns regarding guaranteed places for younger siblings to attend Craigie Primary School if Option 3 was accepted
 - (vi) clarification of the rationale used to select the areas outlined in Option 3
 - (vii) clear reassurances that no pupil would lose their place at their current school
 - (viii) clarification of why the catchment review had been restricted to Perth South and not widened to include other Perth City Schools
 - (ix) concerns regarding the impact of future housebuilding
 - (x) parents concerns that a joint catchment area would present uncertainty for parents
 - (xi) safety concerns: increase in volume of traffic, access, congestion and safe walking routes
- 3.3 7 individual responses were also submitted to the Council. The representations were acknowledged and a reassurance that the issues raised would be considered as part of the proposal. Copies of the representations and minutes of the public meetings are available in the Members' Lounge for perusal.
- 3.4 Of the 7 representations submitted in writing, 5 parents favoured a shared catchment area or no change to the existing catchment areas. However, agreeing to this proposal would provide uncertainty for parents for obtaining places in their favoured school.

- 3.5 To reassure existing Craigie Primary School parents it is recommended that the Lifelong Learning Committee authorises the Executive Director (Education and Children's Services) to manage the Perth and Kinross Council Admissions Policy to provide guaranteed places where requested, where possible, for younger siblings of any existing Craigie Primary School pupils no longer in the revised Craigie Primary School catchment area to attend Craigie Primary School.

4 PROPOSALS

- 4.1 Following the outcome of the statutory consultation, it is proposed to adopt the catchment area as outlined in Appendix 2. This proposes 3 fixed catchment areas for Craigie and Moncreiffe Primary Schools and Inch View Nursery and Primary School. This option reduces the catchment area for Craigie Primary School by removing the area bordered by Needless Road, Glover Street and Glasgow Road as detailed in Appendix 3. Consequently this area will become part of the catchment area for Inch View Nursery and Primary School.
- 4.2 It is proposed that these revised catchment areas will become operational for pupil registrations for session 2009/2010.

5 CONSULTATION

The Executive Director (Corporate Services), Head of Democratic Services, Head of Legal Services, along with parents, staff and the wider community, as outlined in section 2.4, have been consulted in the preparation of this report.

6 RESOURCE IMPLICATIONS

The funding for the statutory consultation exercise has been met from the existing Education and Children's Services budget.

7 COUNCIL CORPORATE PLAN OBJECTIVES 2006-2010

- 7.1 This report takes forward the Service's Statement of Intent and links to Business Management and Improvement Plan objectives:
- Develop the range and quality learning experiences for all
 - Raise standards of performance and achievement
 - Developing caring and confident communities

The report also links to the Education & Children's Services Policy Framework in respect of the following key policy areas:

- Change and Improvement
- Communication and Consultation
- Inclusion and Equality
- Integrated Working
- Leadership and Management
- Learning: Developing Communities
- Learning: Realising Potential
- Maximising Resources

7.2 The Council's Corporate Plan 2006-2010 lays out five objectives which provide clear strategic direction, inform decisions at a corporate and service level and shape resources allocation. They are as follows:

- Educated, Responsible and Informed Citizens
- Confident, Active and Inclusive Communities

8 EQUALITIES ASSESSMENT

The redelineation of existing catchment areas for 3 neighbouring schools presented in this report was considered under the Corporate Equalities Assessment Framework and the determination was made that the items summarised in this report do not require further assessment.

9 STRATEGIC ENVIRONMENTAL ASSESSMENT

The redelineation of existing catchment areas for 3 neighbouring schools presented in this report was considered under the Environmental Assessment (Scotland) Act 2005 and the determination was made that the items summarised in this report do not require further action as they do not qualify as a plan, programme or strategy as defined by the Act.

10 CONCLUSION

This report advises members of the Lifelong Learning Committee of the outcomes of the statutory consultation exercise carried out and makes recommendations regarding the specific catchment area to be adopted as outlined in Appendix No.2. The report also authorises the Executive Director (Education and Children's Services) to manage the Perth and Kinross Council Admissions Policy to provide guaranteed places where possible to younger siblings of any existing Craigie Primary School pupils no longer in the revised Craigie Primary School catchment area (who otherwise would have been

within the previous catchment area) to attend Craigie Primary School where their parents wish this.

The revised catchment area would be operational for pupil registrations for session 2009/2010.

JOHN FYFFE
Executive Director (Education and Children's Services)

- Note:** No background papers, as defined by Section 50D of the Local Government (Scotland) Act 1973 (other than any containing confidential or exempt information) were relied on to any material extent in preparing the above report.
- Contact Officer:** Alan Taylor, Head of Support Services, Ext. No.76225 & E-mail Address AMTaylor@pkc.gov.uk.
- Address of Service:** Pullar House, 35 Kinnoull Street, PERTH, PH1 5GD
- Date:** 29 July 2008
- Appendices:** Appendix No.1 – Options for Consultation
Appendix No.2 – Proposed Catchment Area
Appendix No.3 – Detailed Map of Proposed Area for Change

If you or someone you know would like a copy of this document in another language or format, (on occasion only, a summary of the document will be provided in translation), this can be arranged by contacting *The Communications Manager*
E-mail: ecsgeneralenquiries@pkc.gov.uk

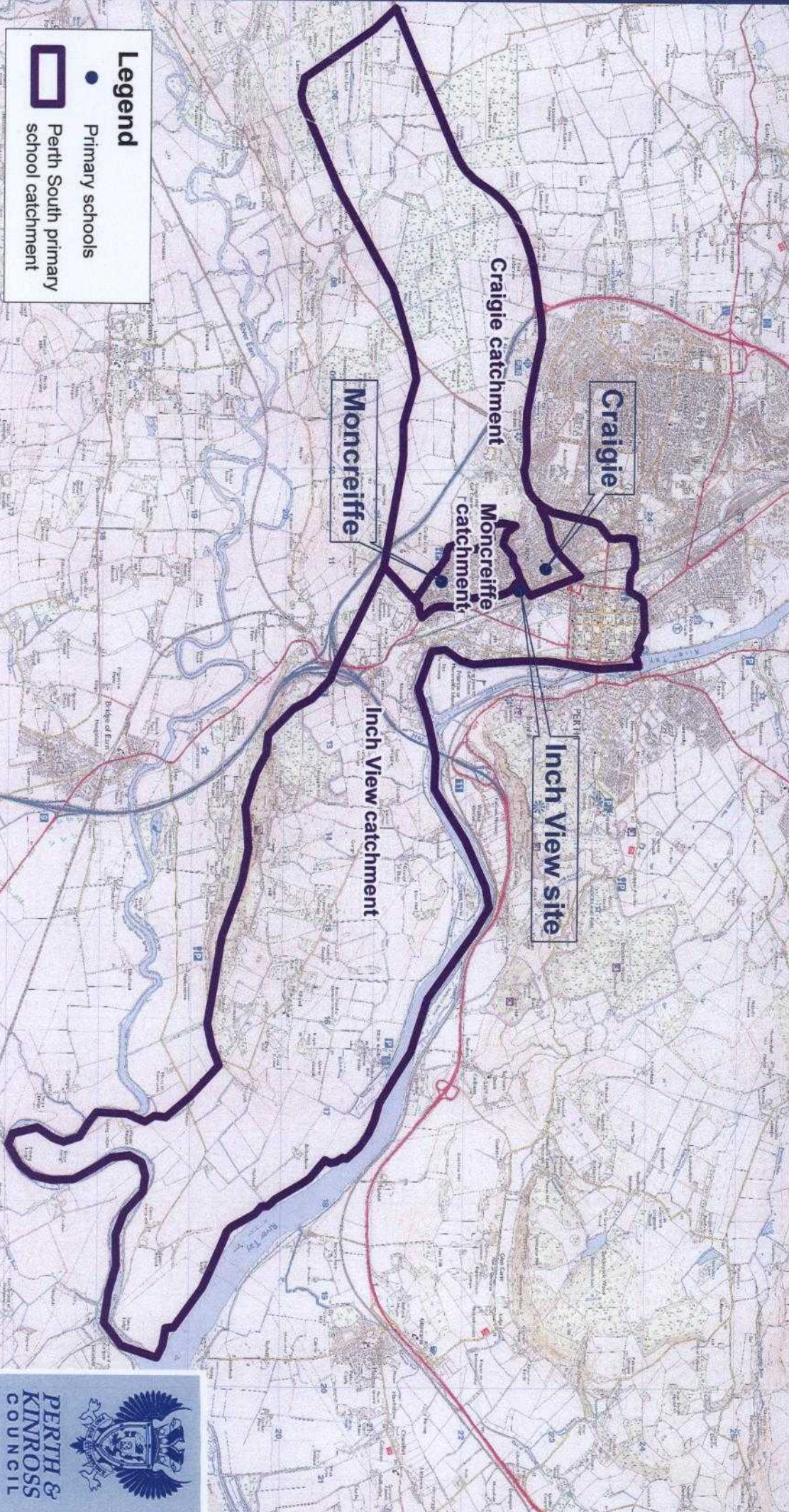


Council Text Phone Number 01738 442573

Options for Consultation

1. The existing Caledonian Road Primary School catchment area becomes the catchment area for the new Inch View Primary School. (Note: The school would not be situated within its own catchment area.)
2. Abolish the existing Craigie Primary School, Moncreiffe Primary School and Caledonian Road Primary School catchment areas and amalgamate the three existing catchment areas into one combined catchment area. (Note: This would be similar to the combined catchment area for Oakbank and Viewlands Primary Schools which are managed through the Perth and Kinross Council Education and Children's Services Admissions Policy.)
3. Three separate new catchment areas are identified through the consultation process.
4. An amalgamation of 2 and 3, above, in some form, which could involve a 'flexible core' with fixed catchment areas for the outer perimeter.
5. Any other options identified by consultees during the consultation that are considered manageable by the Executive Director (Education and Children's Services).

South Perth primary school catchments: Option 3



Legend

- Primary schools
- ▭ Perth South primary school catchment

This map is based upon Ordnance Survey material with the permission of Ordnance Survey on behalf of the Controller of Her Majesty's Stationery Office. © Crown copyright. Unauthorised reproduction infringes Crown copyright and may lead to prosecution or civil proceedings. Perth & Kinross Council. Licence number 100016971. 2008.

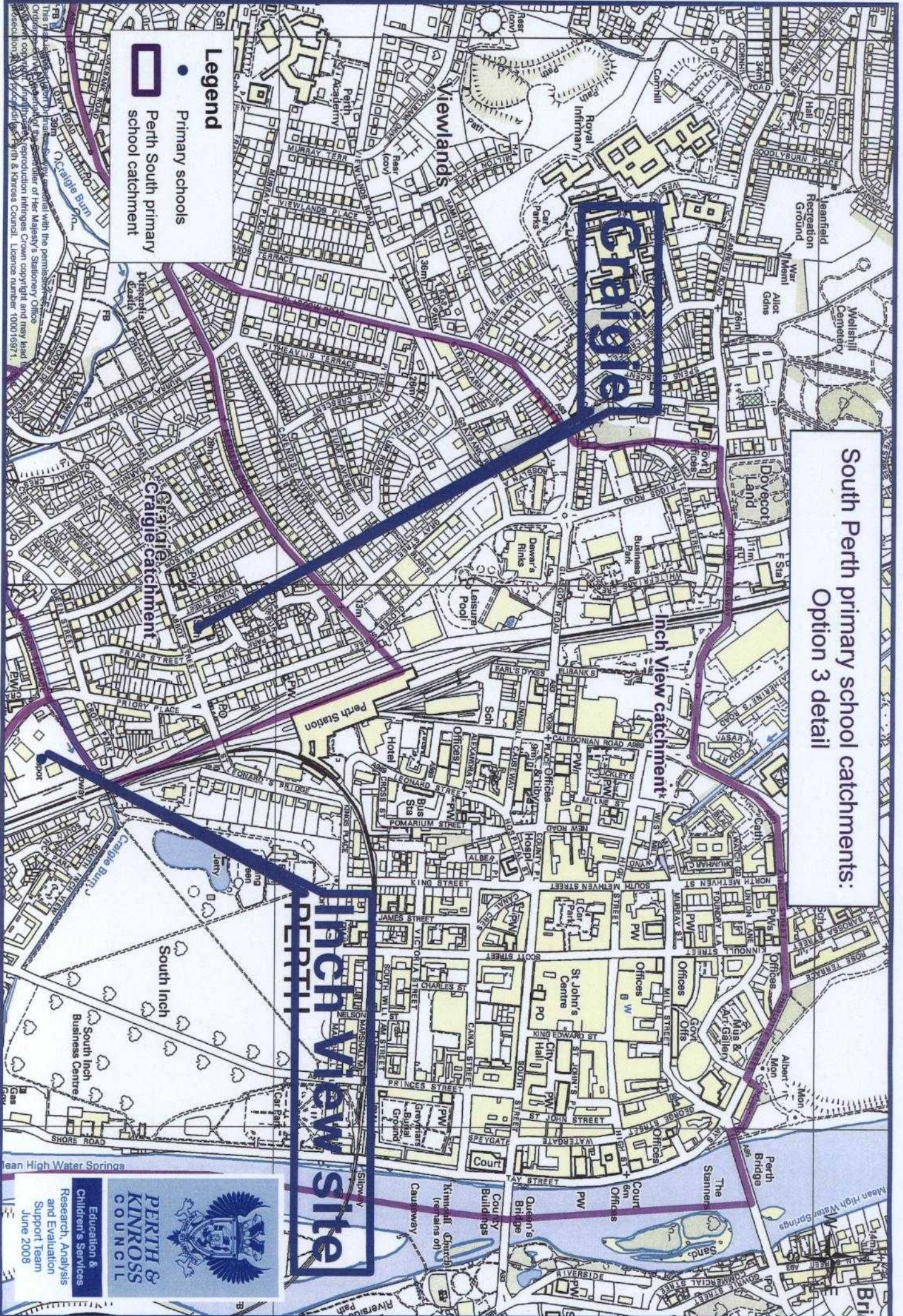


PERTH & KINROSS COUNCIL

Education & Children's Services
Research, Analysis and Evaluation Support Team
June 2008

South Perth primary school catchments:
Option 3 detail

- Legend**
- Primary schools
 - ▭ Perth South primary school catchment



INCH VIEW SITE

Perth & Kinross Council logo and contact information:

Perth & Kinross Council

Education & Children's Services
Research, Analysis and Evaluation Support Team
June 2008