



www.landuse.co.uk

Perth and Kinross Local Landscape Designations Review - Method Statement

Prepared by LUC in association with STAR Development Group
April 2014

Planning & EIA
Design
Landscape Planning
Landscape Management
Ecology
Mapping & Visualisation

LUC EDINBURGH
28 Stafford Street
Edinburgh
EH3 7BD
Tel: 0131 202 1616
edinburgh@landuse.co.uk

Offices also in:
London
Bristol
Glasgow



FS 566056
EMS 566057

Land Use Consultants Ltd
Registered in England
Registered number: 2549296
Registered Office:
43 Chalton Street
London NW1 1JD
LUC uses 100% recycled paper

Project Title: Perth and Kinross Local Landscape Designations Review

Client: Perth and Kinross Council

Version	Date	Version Details	Prepared by	Checked by	Approved by Principal
V1.0	15.04.2014	First draft	LUC	Paul Macrae	Nick James
V2.0	02.05.2014	Final version	LUC	Paul Macrae	Nick James

Contents

1	Introduction	1
	Purpose of the Study	1
	Study Area	2
2	Method Statement	3
	Introduction	3
	Task 1: Inception	3
	Task 2: Methodology	3
	Task 3: Stakeholder engagement	3
	Task 4: Baseline and audit of existing designations	4
	Task 5: Quantitative Evaluation	7
	Task 6: Qualitative Analysis	14
	Task 7: Selection of candidate areas	14
	Task 8: Stakeholder engagement	15
	Task 9: Statements of importance	15
	Task 10 Reporting	15
	Task 11: Stakeholder engagement	16
3	Programme	17
Appendix 1		18
	Survey Questionnaire	18

Tables

Table 2.1	Landscape baseline for the LLDR	4
Table 3.1	Potential criteria for the evaluation of landscape	7
Table 6.2	: Project programme	17

Figures

Figure 1:	Study Area
Figure 2:	Landscape Character Types and Units

1 Introduction

- 1.1 LUC, in association with STAR Development Group, has been appointed (March 2014) to carry out a review of local landscape designations within the Perth and Kinross Council area. The study will provide an evidence base to inform landscape protection and support implementation of the Local Development Plan. The project is being overseen by a steering group led by Perth and Kinross Council, with representative members from Scottish Natural Heritage (SNH) and Perth and Kinross Heritage Trust (PKHT).
- 1.2 This document introduces the study and outlines LUC's proposed approach. It is based on the methodology presented in our tender submission, but has been amended based on discussions at the inception meeting, held on 11 March 2014.
- 1.3 A workshop meeting to discuss the method statement was held with the steering group on 1 May 2014, resulting in further minor amendments to the outlined approach.

Purpose of the Study

- 1.4 It is intended that the study will inform the preparation of Supplementary Planning Guidance (SPG) on local landscape designations.
- 1.5 The project brief defines the overall purpose of the project as being:
 - To identify Perth & Kinross landscapes which have particular value and merit special attention as designated local landscapes.
 - To inform a Perth & Kinross wide 'all-landscapes' approach and future landscape objectives.
 - To inform the preparation of the Development Plan.
 - To inform future design guidelines, development briefs, master plans and developers' concept statements.
 - To support Perth & Kinross Council's wide ranging objectives, in terms of the key themes of the Perth & Kinross Community Plan/Single Outcome Agreement, including the Biodiversity Action Plan and Core Path Plan.
- 1.6 More detailed objectives are defined in paragraph 22 of the Brief as follows:
 - Review the purpose, coverage and function of the former Areas of Great Landscape Value (AGLVs).
 - Define and implement a clear methodology for proposing new Local Landscape Areas (LLAs) based on the process recommended by the SNH/ Historic Scotland (HS) publication 'Guidance on Local Landscape Designations'.
 - Assess the Perth and Kinross landscapes to identify areas which merit protection as LLAs and areas that do not. This should be a systematic and transparent approach for defining proposals for new designations.
 - Identify the local landscape character and qualities of individual LLAs and existing AGLVs. Production of clear descriptions of the character, qualities and value of the proposed/ designated areas and identification of justifiable boundaries.
 - Develop draft Supplementary Planning Guidance (SPG) based on the review of AGLVs and identification of LLAs. The SPG will encourage and support development that conserves and enhances the essential character and quality of LLAs, whilst recognising that all landscapes are dynamic and subject to change.

- Improve the effectiveness of Local Development Plan Policy ER6 by providing robust and defensible LLAs. This will also provide a better informed policy framework for all landscapes in Perth and Kinross.

1.7 This Method Statement has been developed with these overall objectives in mind.

Study Area

1.8 The study area is defined as the Perth and Kinross Council area, excluding those areas within the Cairngorms National Park and Loch Lomond and the Trossachs National Park. Where there are strong links with adjacent landscapes in neighbouring local authority areas, including views in and out of the area, these will be considered. The study area is shown in **Figure 1**.

2 Method Statement

Introduction

- 2.1 This method statement builds on the draft methodology presented in LUC's submission to PKC dated February 2014, which set out the eleven main tasks which are discussed in more detail below.

Task 1: Inception

- 2.2 The inception meeting was held 11 March 2014, and was attended by LUC, the Council, SNH and Perth and Kinross Heritage Trust. The points of discussion included:
- the purpose of local landscape designations, including the original purposes of the previous AGLVs, and the aim for new designations in relation to development pressures;
 - the importance of achieving greater consistency across the whole Council area was highlighted;
 - specific issues included the importance of historical landscapes, the Highland Boundary Fault, green corridors, and the relationship between LLAs and NSAs, highlighting that there are areas where NSAs may be vulnerable to changes outside their boundaries; and
 - a 'review panel' approach to consultation was agreed, with PKC and STAR to agree dates and list of invitees, and supported by a Facebook page and online survey.

Task 2: Methodology

- 2.3 The methodology for the Local Landscape Designations Review (LLDR) has been drawn from *Guidance on Local Landscape Designations* (SNH and Historic Scotland, 2005) and developed based on LUC's past experience in designation reviews. This Method Statement presents the initial output of Task 2.

Task 3: Stakeholder engagement

- 2.4 We recognise the importance of meaningful stakeholder engagement as part of this project, but also the challenges of undertaking this across an area as large and diverse as Perth and Kinross. We have therefore devised a twin-track approach comprising a review panel made up of local stakeholders and a wider questionnaire survey to elicit information about people's views on the most special landscapes in Perth and Kinross.

Review Panel

- 2.5 The Review Panel will meet three times over the course of the project to:
- review the project methodology and contribute information about valued landscapes across Perth and Kinross;
 - review the candidate areas prior to the detailed definition of boundaries and preparation of statements of importance; and
 - receive a presentation of final candidate areas at the conclusion of the project.

- 2.6 The panel is made up of representatives of communities (community councils and community trusts), heritage and other interest groups and land management (farm, estate and woodland) interests. The panel numbers around 30 people with a representative spread in terms of interest and background, geography and factors such as age and gender.
- 2.7 The Review Panel meetings will be facilitated by STAR, with support from LUC, and will be held in Perth on the following dates:
- 24 April;
 - 20 May; and
 - 10 June.
- 2.8 The first of the Review Panel meetings was held on 24 April 2014 and members were asked to identify the areas across Perth and Kinross they thought to be “important” or “special”. The members were asked to rate these places using the defined evaluation criteria. The data collated at the Review Panel meetings will be recorded / mapped, and used to verify the results of the technical study undertaken by LUC.

Questionnaire survey

- 2.9 It will also be helpful to find out more about the landscapes across Perth and Kinross that people value or cherish. We have developed an on-line questionnaire which will ask people to record their favourite landscapes and, importantly, the reasons why they value these places. We have used the agreed evaluation criteria (see Task 5) to create a series of potential reasons for nominating a given landscape or place, whilst allowing people to define their own reasons too. This is an approach we used successfully in the Fife Local Landscape Designation Review, creating a rich additional layer of information to inform the process.
- 2.10 The on-line survey will be publicised via email and social media (we propose setting up a project Facebook page to disseminate information and keep people up to date with progress). The survey is included in **Appendix 1**.
- 2.11 The questionnaire will be sent to interested parties as well as being advertised to the wider public. The data collated through the questionnaire survey will be recorded / mapped, and used to verify the results of the technical study undertaken by LUC. The results will be separated from the Review Panel data to allow comparison.

Task 4: Baseline and audit of existing designations

Landscape Baseline

- 2.12 The LLDR will draw on the updated landscape character assessment presented in the *Landscape Study to Inform Planning for Wind Energy Final Report* (David Tyldesley and Associates, 2010). This LCA has refined and sub-divided some of the landscape character types and units identified in the earlier *Tayside Landscape Character Assessment (TLCA)* (LUC, 1999). The *Tyldesley Landscape Study* is therefore the most recent and detailed available characterisation of the Perth and Kinross landscape.
- 2.13 The landscape units to be used in this study are listed in Table 2.1, which is drawn from Table 1 of the Landscape Study. The landscape types and units are illustrated in **Figure 2**. Those units which are highlighted in *italics* lie outside the study area and are not considered in the present study.

Table 2.1 Landscape baseline for the LLDR

Landscape Type	Landscape Sub Type	Landscape Units
1 Highland Glens:	1a Upper Highland Glens	1a(i) Glen Garry 1a(ii) Glen Quaich 1a(iii) Glen Almond

Landscape Type	Landscape Sub Type	Landscape Units
		1a(iv) Glen Turret <i>1a(v) Glen Tilt</i> 1a(vi) Glen Brerachen 1a(vii) Glen Fearnach <i>1a(viii) Glen Lochsie & Glen Taitneach</i> <i>1a(ix) Gleann Beag / Upper Glen Shee</i>
	1b Mid Highland Glens	1b(i) Glen Lyon 1b(ii) Strathbraan 1b(iii) Sma' Glen 1b(iv) Glen Lednock 1b(v) Glen Artney 1b(vi) Strathardle 1b(vii) Mid Glen Shee
	1c Lower Highland Glens	1c(i) River Garry / River Tummel 1c(ii) Strath Tay 1c(iii) Strathearn 1c(iv) Lower Glen Shee
2 Highland Glens with Lochs:	2a Upper Highland Glens with Lochs	2a(i) Loch Ericht 2a(ii) Loch an Daimh 2a(iii) Loch Lyon
	2b Mid Highland Glens with Lochs	2b(i) Loch Errochty 2b(ii) Loch Rannoch 2b(iii) Dunalastair 2b(iv) Loch Tay 2b(v) Loch Earn 2b(vi) Loch Freuchie
	2c Lower Highland Glens with Lochs	2c Loch Tummel
3 Highland Summits and Plateaux:	3a Mountain Summits & Steep Ridges	3a(i) Ben Vorlich & the Forest of Glanartney 3a(ii) Creag Liath/Creag Ruadh/Creag Uchdag/ben Chonzie/Meall Dubh/Meall nam Fuaran/Creagan na Beinne Ranges 3a(iii) Ben Lawers and Beinn Heasgarnich Group 3a(iv) Beinn Mhanach/Stuch an Lochain/Meall Buidhe/Carn Gorm/Schiehallion/Farragon Hill Ranges 3a(v) Beinn a' Chuallaich 3a(vi) Rannoch 3a(vii) Talla Bheith Forest 3a(viii) Ben Vrackie/Ben Vuirich/Beinn a' Ghlo Range 3a(ix) Carn an Righ/Meall a' Choire Bhuidhe/Carn Bhinnein/Ben Gulabin Ranges 3a(x) Meall Gorm/Carn an Daimh/Mount Blair Ranges
	3b High Moorland Plateau	<i>3b(i) Forest of Atholl</i> 3b(ii) North East Blair Atholl 3b(iii) Coire a' Bhaile

Landscape Type	Landscape Sub Type	Landscape Units
		3b(iv) Craiganour Forest 3b (v) Meall Dearg/Meall a' Choire Chreagaich 3b(vi) Meall nan Caoraich
	3c Transitional Moorland with Forest	3c(i) Meall a' Chathaidh 3c(ii) Tummel Forest 3c(iii) Drummond Hill 3c(iv) Weem Hill/Dunfallandy Hill 3c(v) Craigvinean Forest 3c(vi) Forest of Clunie 3c(vii) Knock of Balmyle 3c(viii) Forest of Alyth
	3d Transitional Moorland	3d Obney Hills
4 Plateau Moor		4 Rannoch Moor
5 Highland Foothills		5(i) Clunie Foothills 5(ii) Alyth Foothills
6 Lowland Hills		6(i) Knaik Hills 6(ii) Drummond Hills 6(iii) Strathallan Plateau 6(iv) Gask/Dupplin Ridge & Moncreiffe Hill 6(v) Keillour Ridge / Methven Hills 6(vi) Logie Almond / Bankfoot Plateau
7 Lowland River Corridors		7(i) Strath Tay 7(ii) Glen Almond
8 Igneous Hills	8a Ochil Hills	8a(i) Ochil Western & Central Hills and Glens 8a(ii) Ochil Northern & Central Hills and Glens 8a(iii) Ochil Southern & Eastern Hills and Slopes
	8b Sidlaw Hills	8b(i) Sidlaw Southern & Central Hills and Slopes 8b(ii) Sidlaw Eastern Plateau
9 Dolerite Hills		9(i) Lomond Hills 9(ii) Benarty Hills 9(iii) Cleish Hills
10 Broad Valley Lowlands		10(i) Strathmore 10(ii) Pow Water Valley 10(iii) Strathearn 10(iv) Strathallan
11 Firth Lowlands		11 Braes of Gowrie
12 Lowland Basins		12 Loch Leven Basin

2.14 Urban areas are not characterised or described in detail in the *Landscape Study*. For the purposes of the LLDR, areas classed as urban will not be surveyed in detail, since the process does not seek to identify candidate LLAs within settlements. Where undeveloped landscape extends into settlement boundaries, for example at the North Inch in Perth, this will be noted and these areas will be considered under the adjacent landscape units.

2.15 Of the 80 landscape units in Table 2.1, there are 76 which lie within the study area. These will be adopted as the baseline for the LLDR, subject to further refinement to ensure consistency of coverage. This may involve the merging of areas of similar character, or combining small character areas. Each resulting unit will be individually assessed against a range of criteria as described under Task 5.

Existing Landscape Designations and other Baseline Information

2.16 In parallel with the development of the detailed methodology, we will carry out a high-level 'audit' of the existing landscape designations within Perth and Kinross. This will include the five National Scenic Areas, and the two groups of Areas of Great Landscape Value (AGLV) which were formerly designated around Perth and around Kinross. The audit will include an analysis of:

- Location, extent and boundaries;
- Defined special qualities or reasons for designation, if available;
- Landscape character types which are covered; and
- Key landscape characteristics.

2.17 This information will provide background on what landscapes have previously been valued within Perth and Kinross, and why, informing judgements within the present study. The audit will also note the presence of landscape designations adjoining the study area, including the two National Parks, and local landscape designations within Stirling, Clackmannanshire, Fife, Highland, and Argyll and Bute.

2.18 Gathering of other baseline data will also take place at this stage, including material relevant to each of the criteria agreed at Task 2. This will include information on other designations (e.g. National Nature Reserves, Gardens & Designed Landscapes, etc), habitats, geodiversity, cultural heritage, planning allocations and so on. This will also include a review of the relevant studies listed in the brief.

Task 5: Quantitative Evaluation

2.19 The quantitative evaluation represents a systematic, criteria-based assessment of the relative values of each landscape unit. The criteria represent a range of aspects of landscape which may help identify an area which is considered worthy of designation.

2.20 The criteria used for the evaluation stage are critical to the success of the LLDR, and it is therefore essential to agree these, and how they will be applied, at the outset. We have used the draft criteria in the project brief as a basis for the evaluation, adding further criteria from the SNH and HS guidance as appropriate. The workshop will offer the opportunity to discuss each criterion, and to add any others which might be thought relevant. For each we will explore what would constitute a higher or a lower 'score'. We will also discuss potential sources of information to inform the evaluation, and identify any criteria judged to be of particular importance.

Table 2.2 Potential criteria for the evaluation of landscape

Criterion	Definition	Assessment
Identity and sense of place	The extent to which a landscape is representative of the study area as a whole, and to which it contributes to community identity, provides a sense of place or promotes an image of Perth & Kinross at a local, regional or national level.	<ul style="list-style-type: none"> • Desk based (key landscape characteristics, tourist literature) • In the field
Rarity	Landscapes which are unique to Perth & Kinross, or uncommon elsewhere.	<ul style="list-style-type: none"> • Desk based (key landscape characteristics) • In the field

Criterion	Definition	Assessment
Intactness and condition	Landscapes that are intact and distinctive, and in a good state of repair, having been unaffected by development over a considerable period of time and/or where such landscapes may be experiencing development pressure.	<ul style="list-style-type: none"> • Desk based (key landscape characteristics) • In the field
Wildness	The degree of perceived naturalness, lack of modern artefacts or structures, rugged or physically challenging landform and remoteness / inaccessibility.	<ul style="list-style-type: none"> • Desk based (SNH Wildness dataset)
Scenic qualities	The extent to which the landscape contains pleasing combinations of features, or to which it prompts strong sensory appeal.	<ul style="list-style-type: none"> • Desk based (key landscape characteristics, designated landscape datasets) • In the field
Enjoyment	Landscapes which provide access and recreation opportunities for local people and visitors.	<ul style="list-style-type: none"> • Desk based (recreation datasets, core paths)
Built heritage assets	Landscapes in which built heritage assets have a significant influence on character or landscapes which provide key views, in to and away from, important built heritage assets.	<ul style="list-style-type: none"> • Desk based (historic / cultural datasets) • In the field
Cultural qualities	Landscapes which provide cultural associations such as with literature, music, art or local history or which have spiritual associations.	<ul style="list-style-type: none"> • Desk based (key landscape characteristics, tourist literature)
Naturalness and natural heritage assets	The perceived importance to the landscape of features of natural heritage interest, including important habitats, protected sites, and features of geodiversity value.	<ul style="list-style-type: none"> • Desk based (natural heritage datasets) • In the field
Settlement setting	Landscapes of particular importance to the setting of settlements, as a whole, or particular aspects of the settlement, including green corridors between settlements and the countryside and significant open spaces within settlements.	<ul style="list-style-type: none"> • Desk based (settlement boundaries, key landscape characteristics) • In the field
Views	The extent and importance of views in and out of the landscape, including the relative visibility of the landscape from key routes and locations. Landscapes with key views from outwith Perth & Kinross's boundaries, including from the Tay Estuary.	<ul style="list-style-type: none"> • Desk based (scenic viewpoints, key landscape characteristics, tourist literature) • In the field
Non-ranked criteria		
Landscape consistency	The extent to which the landscape is consistent in terms of the above criteria.	<ul style="list-style-type: none"> • In the field
Landscape relationships	The extent to which the landscape is associated with adjacent landscapes, potentially combining to form groupings of high value.	<ul style="list-style-type: none"> • In the field
Policy context	Landscapes which are the subject of, or support other Perth & Kinross wide strategies, plans and projects.	<ul style="list-style-type: none"> • Desk based (local development plan)

- 2.21 Each criterion was developed into an evaluation question, which can be asked in relation to each of the landscape units in Table 2.1. Three possible responses are defined, corresponding to 'ranks' of *low*, *medium*, or *high*. The evaluation questions and responses are set out in Table 2.3.
- 2.22 Three of the criteria are non-ranked. These seek to identify differences in relative value within the landscape unit, and important relationships with other landscape units and designations. They are designed to identify any potential groupings of landscapes, or areas which could be subdivided based on their qualities.
- 2.23 It is important to note that the judgements of *low*, *medium*, or *high* are relative to the landscapes of Perth and Kinross, and do not indicate absolute levels or thresholds. By the same token, the findings cannot be directly related to the findings of other similar studies carried out in relation to other localities.

Table 2.3 Evaluation criteria and decision rules

Criterion	Question	Response	Rank
Identity and sense of place	Does the landscape contain features, or combinations of features, that are distinctive of Perth and Kinross, making a positive contribution to its wider identity, image and sense of place?	The landscape contains features which are highly distinctive or iconic of Perth and Kinross, and these features make a strong positive contribution to identity and sense of place.	High
		The landscape contains some features which are distinctive of Perth and Kinross, or which make a strong positive contribution to identity and sense of place.	Medium
		The landscape contains few or no features which are distinctive of Perth and Kinross, and these do not make a strong positive contribution to identity or sense of place.	Low
Rarity	Does the landscape contain features or a combination of features which are rare or unique within Perth and Kinross, or which are known to be uncommon elsewhere?	Large number of landscape features which are unique within Perth and Kinross, and may be rare across Scotland.	High
		Some landscape features which are rare or unique within Perth and Kinross.	Medium
		Few or no landscape features which are rare or unique within Perth and Kinross.	Low
Intactness and condition	a) Is the landscape intact or has it experienced a decline in quality? Are present and future changes likely to lead to such decline, for example as a consequence of changes in landscape management, patterns of development, or the influence of development in adjacent areas? b) Are the landscape features or combinations of features in a	The landscape shows little or no signs of past, present or potential decline in quality; or The landscape is clearly well managed and maintained, and overall is in a good state of repair.	High
		The landscape has experienced some past decline in quality but is not currently or potentially subject to further decline; or The landscape is generally in a good state of repair, although there are some elements which have been less well maintained and managed.	Medium
		The landscape has experienced past decline in quality, and is potentially	Low

Criterion	Question	Response	Rank
	good state of repair?	subject to further decline; or The landscape is not in a good state of repair, with many elements which have been less well maintained.	
Wildness	Does the landscape display characteristics of wildness, including perceived naturalness, lack of modern artefacts or structures, rugged or physically challenging landform or remoteness / inaccessibility?	The landscape has a high degree of wildness.	High
		The landscape has some degree of wildness.	Medium
		The landscape has no or limited wildness.	Low
Scenic qualities	To what extent is the landscape of scenic value in its own right or to what extent does it contribute to the scenic qualities of the wider area?	Pleasing combination of features, visual contrasts and/or dramatic elements. Visual, sensory, perceptual and experiential qualities which contribute to the natural beauty and appreciation of the landscape.	High
		Some pleasing features, visual contrasts and/or dramatic elements, or visual, sensory, perceptual and experiential qualities. A landscape which contributes to the setting of an adjacent area of high landscape quality.	Medium
		The landscape does not contain particularly pleasing features, visual contrasts and/or dramatic elements, and has more limited visual, sensory, perceptual and experiential qualities.	Low
Enjoyment	To what extent is the landscape enjoyed by local people and visitors, for example in the form of walking, cycling or horse riding, or in the form of more formal recreation activities, which are focused on enjoyment of the landscape?	The landscape is well-used, and is important as a greenspace or recreation area, with provision of access routes, key viewpoints and recreational facilities.	High
		The landscape has some importance as a greenspace or recreation area. Some provision of access routes, key viewpoints and facilities, potentially less well-used.	Medium
		The landscape has little or no greenspace or recreational value, and limited provision of access routes, etc.	Low

Criterion	Question	Response	Rank
Built heritage assets	a) Do built heritage assets have a significant influence on the character of the landscape?	The landscape is rich in visible features of built heritage, which make an important contribution to landscape character; and/or The landscape has many key views to or from heritage assets.	High
	b) Does the landscape provide key views, in to and away from, important built heritage assets?	The landscape has some visible features of built heritage, which make a lesser contribution to landscape character; and/or The landscape has some key views to or from heritage assets.	Medium
		The landscape has few visible features of built heritage; and/or The landscape has few key views to or from heritage assets.	Low
Cultural qualities	Does the landscape have specific historic or cultural associations (including literature, music, art, local history or particular spiritual associations) or does it contribute to the wider cultural heritage of the area?	The landscape is rich in well-known literary or artistic associations, or direct associations with major historical events.	High
		The landscape has some literary historical and artistic associations; these may be less well-known or less direct.	Medium
		The landscape has fewer literary, historical or artistic associations; these may be little-known or of principally local interest.	Low
Naturalness and natural heritage assets	Do features of natural heritage interest, including important habitats, protected sites, and features of geodiversity value make a significant contribution to the landscape?	Natural heritage features are a key aspect of the character of this landscape.	High
		Natural heritage features are of some importance to the character of this landscape.	Medium
		Natural heritage features are not significant to the character of this landscape.	Low
Settlement setting	How important is the landscape in providing the setting for settlements as a whole, or particular aspects of a settlement?	The landscape performs a key function in providing the setting of settlement(s), or contributes strongly to settlement identity.	High
		The landscape performs some function in providing the setting of settlement(s), and/or makes some contribution to settlement identity.	Medium

Criterion	Question	Response	Rank
		The landscape is isolated from or does not perform a function in relation to the setting of settlement(s), and does not make a strong contribution to settlement identity.	Low
Views	Does the landscape provide key views into and out of the landscape?	The landscape is important in views from recognised key viewpoints, settlements or transport routes, and/or includes key landmarks.	High
		The landscape is important in some views from settlements or transport routes, and/or includes landmarks.	Medium
		The landscape does not perform a key function in relation to views from viewpoints, settlements, transport routes or landmarks.	Low

Evaluation Process

- 2.24 The evaluation stage will involve the review of each landscape unit against the agreed assessment criteria. The evaluation will be based on both desk study and on field surveys of Perth and Kinross. Information on each landscape unit will be drawn from available baseline material including the Tayside Landscape Character Assessment (1999) and the Tyldesley Landscape Study (2010). For each of the character units, a standard evaluation sheet will be completed in the field, to record information relating to each criterion. Each landscape character unit will be scored as *high*, *medium* or *low* in relation to each of the agreed criteria and justification for this will be provided in a text description.
- 2.25 The desk based evaluation leads to a series of comparisons between the various landscape units, based on each individual criterion.
- 2.26 To enable this comparison, the ranks assigned under each criterion are converted into numerical values and combined to give an overall 'score' to each landscape unit.
- 2.27 The overall scores are calculated by assigning a value of 1 to a *low* rank, 2 to *medium* and 3 to *high*. This gives a possible range of total 'scores' of between 11 (a landscape unit with 11 *low* ranks) and 33 (a landscape unit with 11 *high* ranks).
- 2.28 The overall scores will show which landscapes are ranked highly under the most criteria. They will therefore give an indication of those landscapes within Perth and Kinross which exhibit the greatest number of the characteristics and qualities which have been considered worthy of recognition through the LLDR. The scores are relative, and do not represent absolute landscape values which can be applied outside the context of this study.
- 2.29 We note the importance of robust and defensible results from the evaluation process, and we will therefore review these with the steering group prior to proceeding to Task 6.

Task 6: Qualitative Analysis

- 2.30 The next stage is to separate those landscapes which may merit designation from those which are unlikely to do so. Those landscape units which may merit designation are taken forward as areas of search or 'core areas', to be refined and developed as potential LLAs.
- 2.31 A simple 'cut-off' can be established, either pegged to a particular minimum score, or based on a proportion of landscape units to be considered. The effect of such an approach is to impose an 'in/out' division, where landscapes below the cut-off are rejected from further consideration. It is recognised that qualities vary across character units, and that there are higher-scoring areas within middle-ranking landscapes. Under a simple in/out division, these areas may be lost to further consideration.
- 2.32 We would engage with the project steering group on the approach to identifying the candidate LLA. This has previously involved the application of weighting to some criteria, and discussion on the level of scores for consideration as LLA.

Task 7: Selection of candidate areas

- 1.1 Following identification of the candidate LLAs, the practical criteria set out in the SNH/HS guidance will be applied to inform choices over inclusion. These practical criteria are:
- identity and coherence;
 - suitable size;
 - other policy/strategy considerations; and
 - boundary features.
- 2.33 It is important that LLAs represent recognisable landscape units with a logical theme or focus such as upland hills, a coastal landscape, or a group of river valleys. We will engage with the project

steering group on the refinement and overall extent of the selected areas. Boundary definition will take account of a number of issues including:

- overlap with other designations, including gardens and designed landscapes, urban open space, and so on;
- availability of physical boundary features: it is usually preferable to move outward from a core area to the next available boundary, and to include areas of lower merit, than to move inward and omit higher quality areas from the designation; and
- existing strategies and other commitments, including planning permissions granted.

Task 8: Stakeholder engagement

- 2.34 At this stage of the project we will hold the second meeting of the Review Panel. This will provide an opportunity to take the Panel through each stage of the work completed to date, including the results of the wider questionnaire survey, and the process of identifying candidate LLAs. The second Review Panel meeting is scheduled for 20 May.
- 2.35 We will follow the Review Panel meeting with a Project Steering Group meeting, providing an opportunity to review the results of the technical assessment, questionnaire survey and Panel recommendations together before finalising the list of candidate areas and preparing statements of importance.

Task 9: Statements of importance

- 2.36 Following boundary agreement, we will prepare for each candidate LLA a 'statement of importance'. This statement includes the following information, presenting a description of the area and a reasoned justification for its designation:
- name of the candidate LLA;
 - location and alignment of boundaries;
 - summary description of the area; and
 - key qualities.
- 2.37 The statements of importance will be accompanied by a detailed map of each candidate LLA. Finalised candidate areas will be mapped at a scale of 1:2500 in rural areas and 1:1250 in urban areas, as required in the project brief.
- 2.38 We note that landscape policy is outside the scope of the study, but the statements of importance would be drafted in such a way as to enable locally appropriate development and landscape management guidance to be attached to each.

Task 10 Reporting

- 2.39 The Local Landscape Designations report will include the following:
- a detailed methodology setting out how the review was undertaken, the stages in the process, and the steps which led to the selection of candidate LLAs;
 - an audit of existing landscape designations within Perth and Kinross, including a description of their location, general attributes and characteristics and the impact of recent development. The audit will include maps, descriptions and any extant justification for the designations, strategic and local policy background and other relevant information;
 - a series of candidate LLAs: specific areas considered worthy of local landscape designation, with reference to the agreed evaluation criteria, together with a summary of how these areas compare with the existing designations;

- a 'statement of importance' for each candidate LLA, including a map showing defined boundaries, a locally recognised name, a description of its location, a short paragraph 'celebrating' the landscape and why it has been identified for designation, a description of its key qualities, and a description of the boundary selected; and
- comprehensive maps and GIS-based datasets of the candidate LLAs.

Task 11: Stakeholder engagement

- 2.40 A third and final meeting of the Review Panel will be held at the end of the project to present the finalised candidate LLAs for Perth and Kinross. This meeting could be extended to include other stakeholders (e.g. other officers from Perth and Kinross Council). The final review panel meeting is scheduled for 10 June.

3 Programme

3.1 Following the inception meeting discussions, we have updated the programme included in our submission. We therefore propose the revised programme set out below.

Table 3.1 : Project programme

	March					April				May				June		
	3	10	17	24	31	7	14	21	28	5	12	19	26	2	9	16
Inception																
Methodology																
Stakeholder engagement 1																
Baseline analysis																
Evaluation																
Analysis																
Candidate LLAs																
Stakeholder engagement 2																
Statements of importance																
Reporting																
Stakeholder engagement 3																
Client liaison																
Interim report																
Draft final report																
Final report																

Appendix 1

Survey Questionnaire

Perth and Kinross Council is carrying out an assessment of landscapes to identify those which justify local designation. The work is being carried out by landscape specialists LUC and STAR Development Group.

To help with this process, we would like to find out about your favourite landscapes and places.

These may be hills, straths or glens close to your home or further afield, the kinds of places you might choose to take a friend visiting the area. They may be more hidden, special places or, alternatively, landscapes that are important in your everyday life.

Information you give us about your favourite landscapes and places will inform a technical appraisal which is also being carried out, using an approach developed by Scottish Natural Heritage and Historic Scotland.

For each of your favourite landscapes we would like you to tell us its name and location and the reasons why you like it. The questionnaire allows you to tell us about up to five places. We then ask for a little information about you to help us analyse the results.

If you have any queries, or would like a PDF or paper version of this questionnaire, please contact Melissa McGinley at LUC on 0131 243 9129 or via email melissa.mcginley@landuse.co.uk.

If you would like to be kept informed about the progress of the review, you can provide an email address at the end of the survey.

Using the map

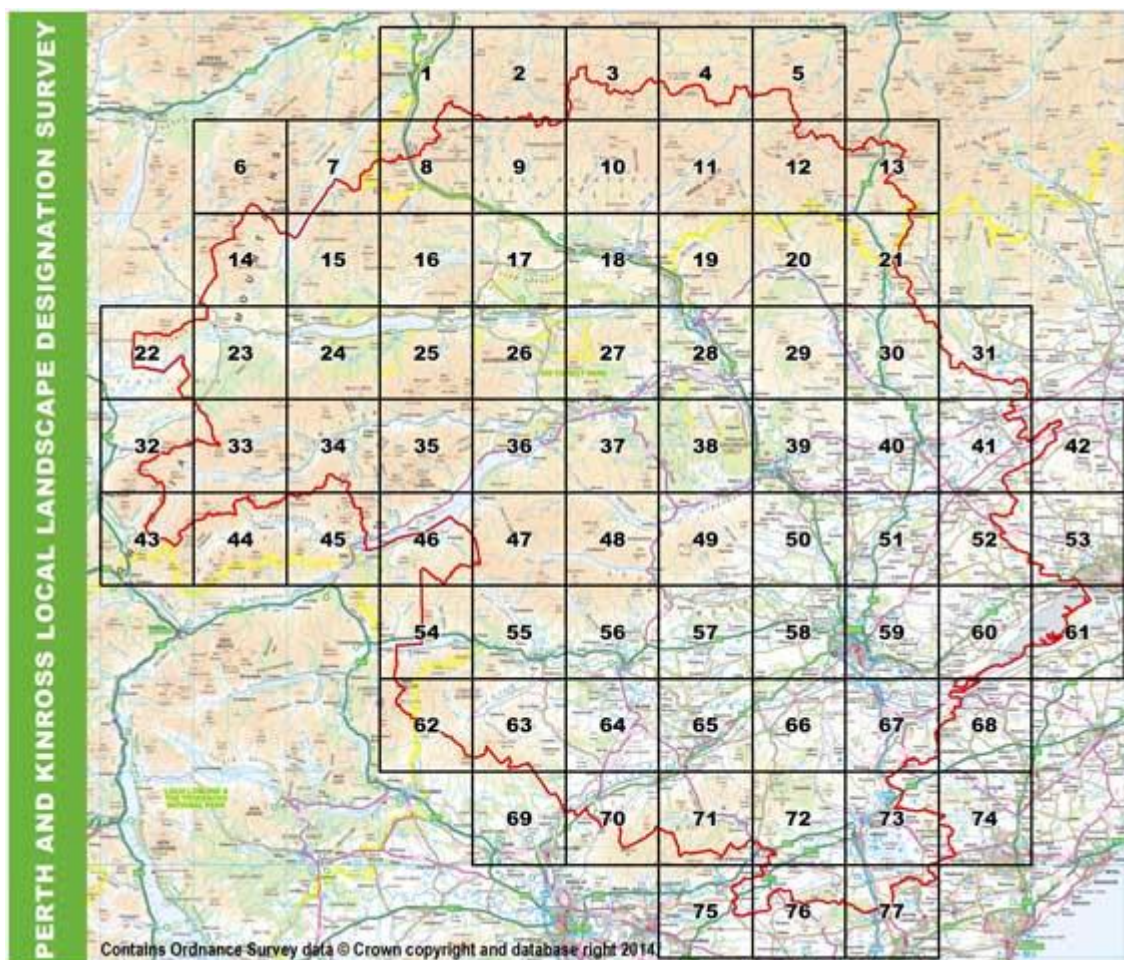
The questionnaire includes a map of Perth and Kinross, divided into a series of grid squares. Each of these grid squares has a number (1 to 76). You can use these numbers to identify the location of each of your favourite landscapes. For areas that extend beyond one grid square, please note the number for the square at its centre. A higher quality version of the map is available at www.pkc.gov.uk/landscape.

Favourite landscape 1

Please tell us about the first of your favourite landscapes in Perth and Kinross

***1. What is the name of this landscape, area or place:**

The map shows Perth and Kinross, divided into a series of grid squares. Each of these grid squares has a number (1 to 77). You can use these numbers to identify the location of each of your favourite landscapes. For areas that extend beyond one grid square, please note the number for the square at its centre. A higher quality version of the map is available at www.pkc.gov.uk/landscape.



***2. In which grid square is it located?**

***3. We would like to know why this is one of your favourite landscapes or places.**

Please could you indicate which of the following apply:

	Agree strongly	Agree	Neutral	Disagree	Disagree strongly	Don't know
This landscape makes a positive contribution to the wider identity, image and sense of place of Perth and Kinross	<input type="radio"/>	<input type="radio"/>	<input type="radio"/>	<input type="radio"/>	<input type="radio"/>	<input type="radio"/>
This landscape is rare or unique	<input type="radio"/>	<input type="radio"/>	<input type="radio"/>	<input type="radio"/>	<input type="radio"/>	<input type="radio"/>
This landscape is well managed and in a good state of repair	<input type="radio"/>	<input type="radio"/>	<input type="radio"/>	<input type="radio"/>	<input type="radio"/>	<input type="radio"/>
This landscape feels wild or remote	<input type="radio"/>	<input type="radio"/>	<input type="radio"/>	<input type="radio"/>	<input type="radio"/>	<input type="radio"/>
This landscape has strong scenic qualities	<input type="radio"/>	<input type="radio"/>	<input type="radio"/>	<input type="radio"/>	<input type="radio"/>	<input type="radio"/>
This landscape is important for recreation, for local people or visitors	<input type="radio"/>	<input type="radio"/>	<input type="radio"/>	<input type="radio"/>	<input type="radio"/>	<input type="radio"/>
This landscape has a strong historic character	<input type="radio"/>	<input type="radio"/>	<input type="radio"/>	<input type="radio"/>	<input type="radio"/>	<input type="radio"/>
This landscape has important cultural or spiritual associations	<input type="radio"/>	<input type="radio"/>	<input type="radio"/>	<input type="radio"/>	<input type="radio"/>	<input type="radio"/>
This landscape has important natural features and habitats	<input type="radio"/>	<input type="radio"/>	<input type="radio"/>	<input type="radio"/>	<input type="radio"/>	<input type="radio"/>
This landscape forms an important part of the setting of villages or towns	<input type="radio"/>	<input type="radio"/>	<input type="radio"/>	<input type="radio"/>	<input type="radio"/>	<input type="radio"/>
This landscape has important views, viewpoints or landmarks	<input type="radio"/>	<input type="radio"/>	<input type="radio"/>	<input type="radio"/>	<input type="radio"/>	<input type="radio"/>

If you like, in your own words, please describe why this landscape is important to you

4. Do you have any other favourite landscapes you can tell us about?

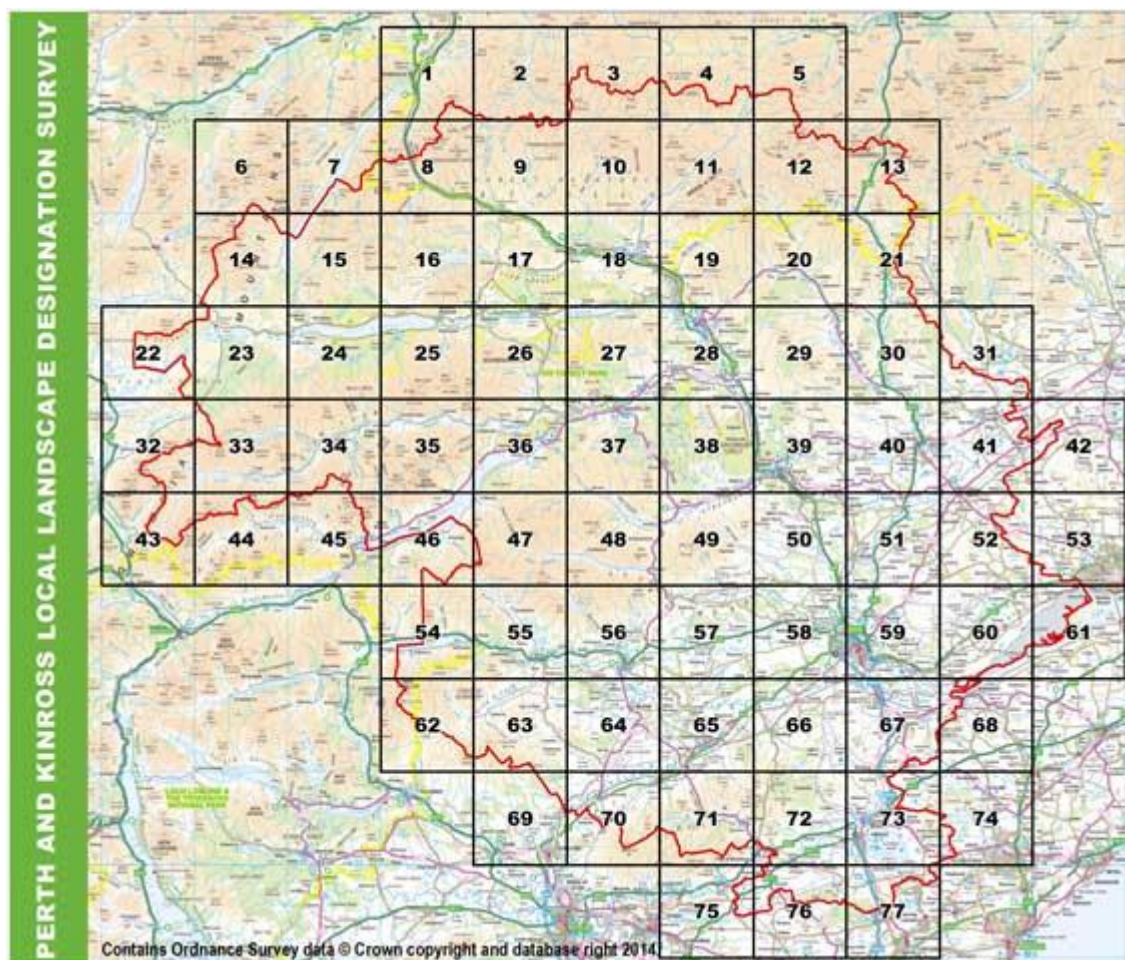
- Yes
- No

Favourite landscape 2

Please tell us about the second of your favourite landscapes in Perth and Kinross

5. What is the name of this landscape, area or place:

The map shows Perth and Kinross, divided into a series of grid squares. Each of these grid squares has a number (1 to 77). You can use these numbers to identify the location of each of your favourite landscapes. For areas that extend beyond one grid square, please note the number for the square at its centre. A higher quality version of the map is available at www.pkc.gov.uk/landscape.



6. In which grid square is it located?

***7. We would like to know why this is one of your favourite landscapes or places.**

Please could you indicate which of the following apply:

	Agree strongly	Agree	Neutral	Disagree	Disagree strongly	Don't know
This landscape makes a positive contribution to the wider identity, image and sense of place of Perth and Kinross	<input type="radio"/>	<input type="radio"/>	<input type="radio"/>	<input type="radio"/>	<input type="radio"/>	<input type="radio"/>
This landscape is rare or unique	<input type="radio"/>	<input type="radio"/>	<input type="radio"/>	<input type="radio"/>	<input type="radio"/>	<input type="radio"/>
This landscape is well managed and in a good state of repair	<input type="radio"/>	<input type="radio"/>	<input type="radio"/>	<input type="radio"/>	<input type="radio"/>	<input type="radio"/>
This landscape feels wild or remote	<input type="radio"/>	<input type="radio"/>	<input type="radio"/>	<input type="radio"/>	<input type="radio"/>	<input type="radio"/>
This landscape has strong scenic qualities	<input type="radio"/>	<input type="radio"/>	<input type="radio"/>	<input type="radio"/>	<input type="radio"/>	<input type="radio"/>
This landscape is important for recreation, for local people or visitors	<input type="radio"/>	<input type="radio"/>	<input type="radio"/>	<input type="radio"/>	<input type="radio"/>	<input type="radio"/>
This landscape has a strong historic character	<input type="radio"/>	<input type="radio"/>	<input type="radio"/>	<input type="radio"/>	<input type="radio"/>	<input type="radio"/>
This landscape has important cultural or spiritual associations	<input type="radio"/>	<input type="radio"/>	<input type="radio"/>	<input type="radio"/>	<input type="radio"/>	<input type="radio"/>
This landscape has important natural features and habitats	<input type="radio"/>	<input type="radio"/>	<input type="radio"/>	<input type="radio"/>	<input type="radio"/>	<input type="radio"/>
This landscape forms an important part of the setting of villages or towns	<input type="radio"/>	<input type="radio"/>	<input type="radio"/>	<input type="radio"/>	<input type="radio"/>	<input type="radio"/>
This landscape has important views, viewpoints or landmarks	<input type="radio"/>	<input type="radio"/>	<input type="radio"/>	<input type="radio"/>	<input type="radio"/>	<input type="radio"/>

If you like, in your own words, please describe why this landscape is important to you

8. Do you have any other favourite landscapes you can tell us about?

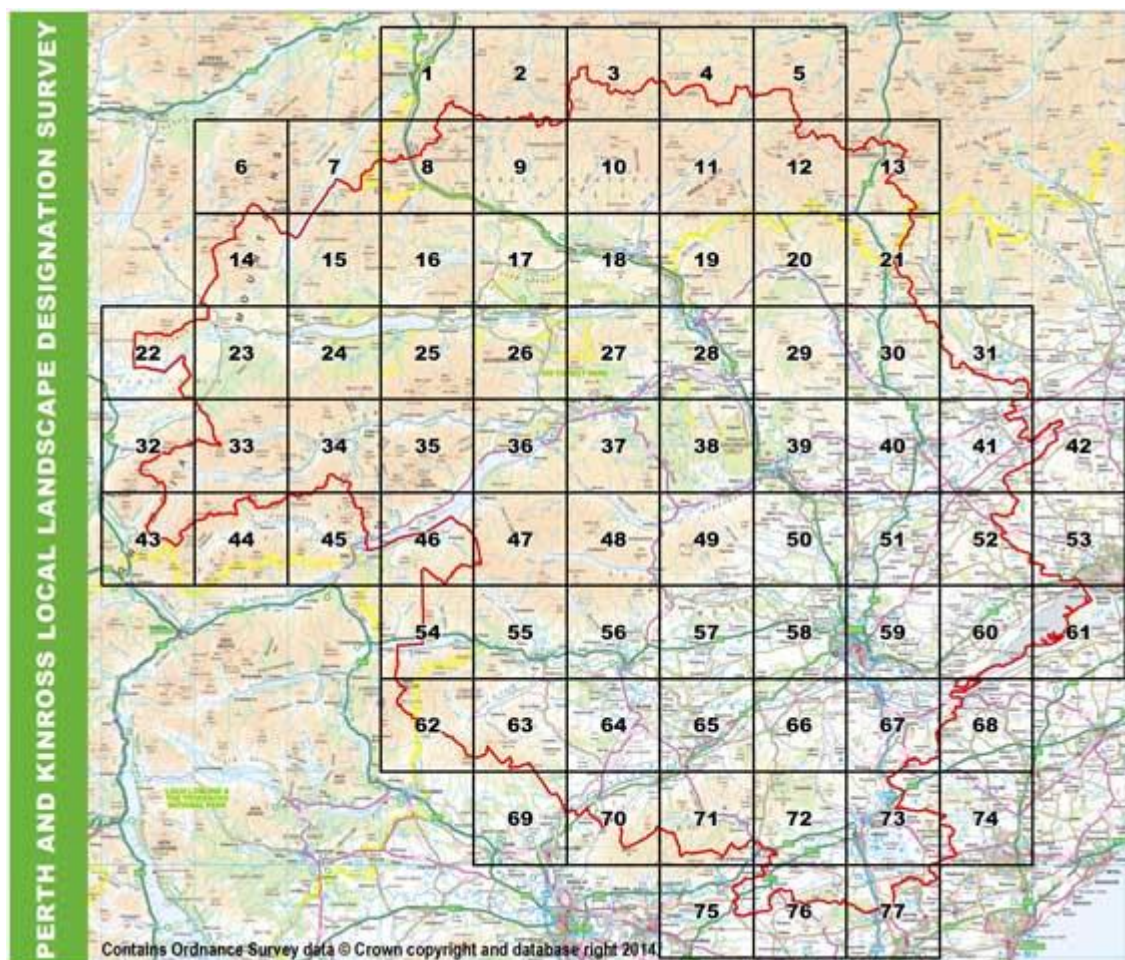
- Yes
- No

Favourite landscape 3

Please tell us about the third of your favourite landscapes in Perth and Kinross

9. What is the name of this landscape, area or place:

The map shows Perth and Kinross, divided into a series of grid squares. Each of these grid squares has a number (1 to 77). You can use these numbers to identify the location of each of your favourite landscapes. For areas that extend beyond one grid square, please note the number for the square at its centre. A higher quality version of the map is available at www.pkc.gov.uk/landscape.



10. In which grid square is it located?

***11. We would like to know why this is one of your favourite landscapes or places.**

Please could you indicate which of the following apply:

	Agree strongly	Agree	Neutral	Disagree	Disagree strongly	Don't know
This landscape makes a positive contribution to the wider identity, image and sense of place of Perth and Kinross	<input type="radio"/>	<input type="radio"/>	<input type="radio"/>	<input type="radio"/>	<input type="radio"/>	<input type="radio"/>
This landscape is rare or unique	<input type="radio"/>	<input type="radio"/>	<input type="radio"/>	<input type="radio"/>	<input type="radio"/>	<input type="radio"/>
This landscape is well managed and in a good state of repair	<input type="radio"/>	<input type="radio"/>	<input type="radio"/>	<input type="radio"/>	<input type="radio"/>	<input type="radio"/>
This landscape feels wild or remote	<input type="radio"/>	<input type="radio"/>	<input type="radio"/>	<input type="radio"/>	<input type="radio"/>	<input type="radio"/>
This landscape has strong scenic qualities	<input type="radio"/>	<input type="radio"/>	<input type="radio"/>	<input type="radio"/>	<input type="radio"/>	<input type="radio"/>
This landscape is important for recreation, for local people or visitors	<input type="radio"/>	<input type="radio"/>	<input type="radio"/>	<input type="radio"/>	<input type="radio"/>	<input type="radio"/>
This landscape has a strong historic character	<input type="radio"/>	<input type="radio"/>	<input type="radio"/>	<input type="radio"/>	<input type="radio"/>	<input type="radio"/>
This landscape has important cultural or spiritual associations	<input type="radio"/>	<input type="radio"/>	<input type="radio"/>	<input type="radio"/>	<input type="radio"/>	<input type="radio"/>
This landscape has important natural features and habitats	<input type="radio"/>	<input type="radio"/>	<input type="radio"/>	<input type="radio"/>	<input type="radio"/>	<input type="radio"/>
This landscape forms an important part of the setting of villages or towns	<input type="radio"/>	<input type="radio"/>	<input type="radio"/>	<input type="radio"/>	<input type="radio"/>	<input type="radio"/>
This landscape has important views, viewpoints or landmarks	<input type="radio"/>	<input type="radio"/>	<input type="radio"/>	<input type="radio"/>	<input type="radio"/>	<input type="radio"/>

If you like, in your own words, please describe why this landscape is important to you

12. Do you have any other favourite landscapes you can tell us about?

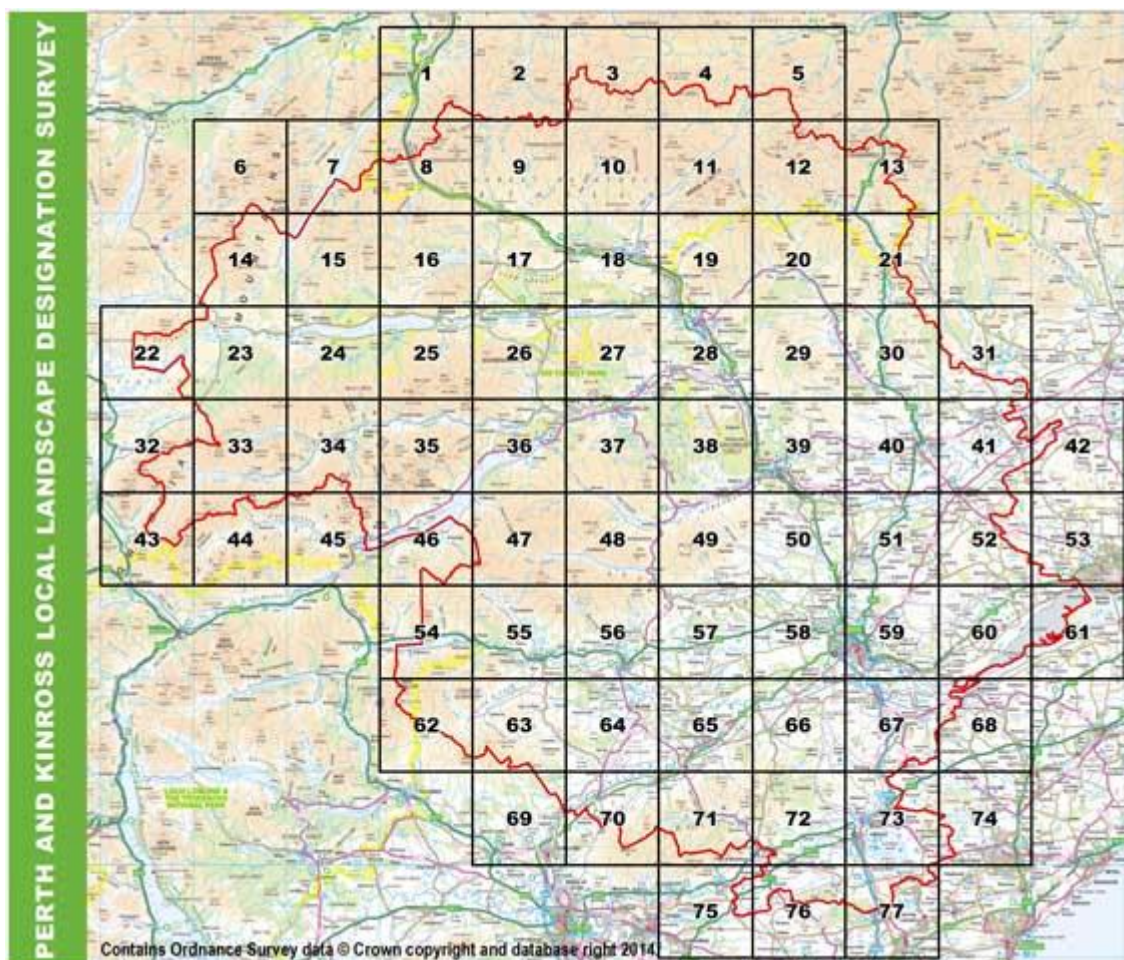
- Yes
- No

Favourite landscape 4

Please tell us about the fourth of your favourite landscapes in Perth and Kinross

13. What is the name of this landscape, area or place:

The map shows Perth and Kinross, divided into a series of grid squares. Each of these grid squares has a number (1 to 77). You can use these numbers to identify the location of each of your favourite landscapes. For areas that extend beyond one grid square, please note the number for the square at its centre. A higher quality version of the map is available at www.pkc.gov.uk/landscape.



14. In which grid square is it located?

***15. We would like to know why this is one of your favourite landscapes or places.**

Please could you indicate which of the following apply:

	Agree strongly	Agree	Neutral	Disagree	Disagree strongly	Don't know
This landscape makes a positive contribution to the wider identity, image and sense of place of Perth and Kinross	<input type="radio"/>	<input type="radio"/>	<input type="radio"/>	<input type="radio"/>	<input type="radio"/>	<input type="radio"/>
This landscape is rare or unique	<input type="radio"/>	<input type="radio"/>	<input type="radio"/>	<input type="radio"/>	<input type="radio"/>	<input type="radio"/>
This landscape is well managed and in a good state of repair	<input type="radio"/>	<input type="radio"/>	<input type="radio"/>	<input type="radio"/>	<input type="radio"/>	<input type="radio"/>
This landscape feels wild or remote	<input type="radio"/>	<input type="radio"/>	<input type="radio"/>	<input type="radio"/>	<input type="radio"/>	<input type="radio"/>
This landscape has strong scenic qualities	<input type="radio"/>	<input type="radio"/>	<input type="radio"/>	<input type="radio"/>	<input type="radio"/>	<input type="radio"/>
This landscape is important for recreation, for local people or visitors	<input type="radio"/>	<input type="radio"/>	<input type="radio"/>	<input type="radio"/>	<input type="radio"/>	<input type="radio"/>
This landscape has a strong historic character	<input type="radio"/>	<input type="radio"/>	<input type="radio"/>	<input type="radio"/>	<input type="radio"/>	<input type="radio"/>
This landscape has important cultural or spiritual associations	<input type="radio"/>	<input type="radio"/>	<input type="radio"/>	<input type="radio"/>	<input type="radio"/>	<input type="radio"/>
This landscape has important natural features and habitats	<input type="radio"/>	<input type="radio"/>	<input type="radio"/>	<input type="radio"/>	<input type="radio"/>	<input type="radio"/>
This landscape forms an important part of the setting of villages or towns	<input type="radio"/>	<input type="radio"/>	<input type="radio"/>	<input type="radio"/>	<input type="radio"/>	<input type="radio"/>
This landscape has important views, viewpoints or landmarks	<input type="radio"/>	<input type="radio"/>	<input type="radio"/>	<input type="radio"/>	<input type="radio"/>	<input type="radio"/>

If you like, in your own words, please describe why this landscape is important to you

16. Do you have any other favourite landscapes you can tell us about?

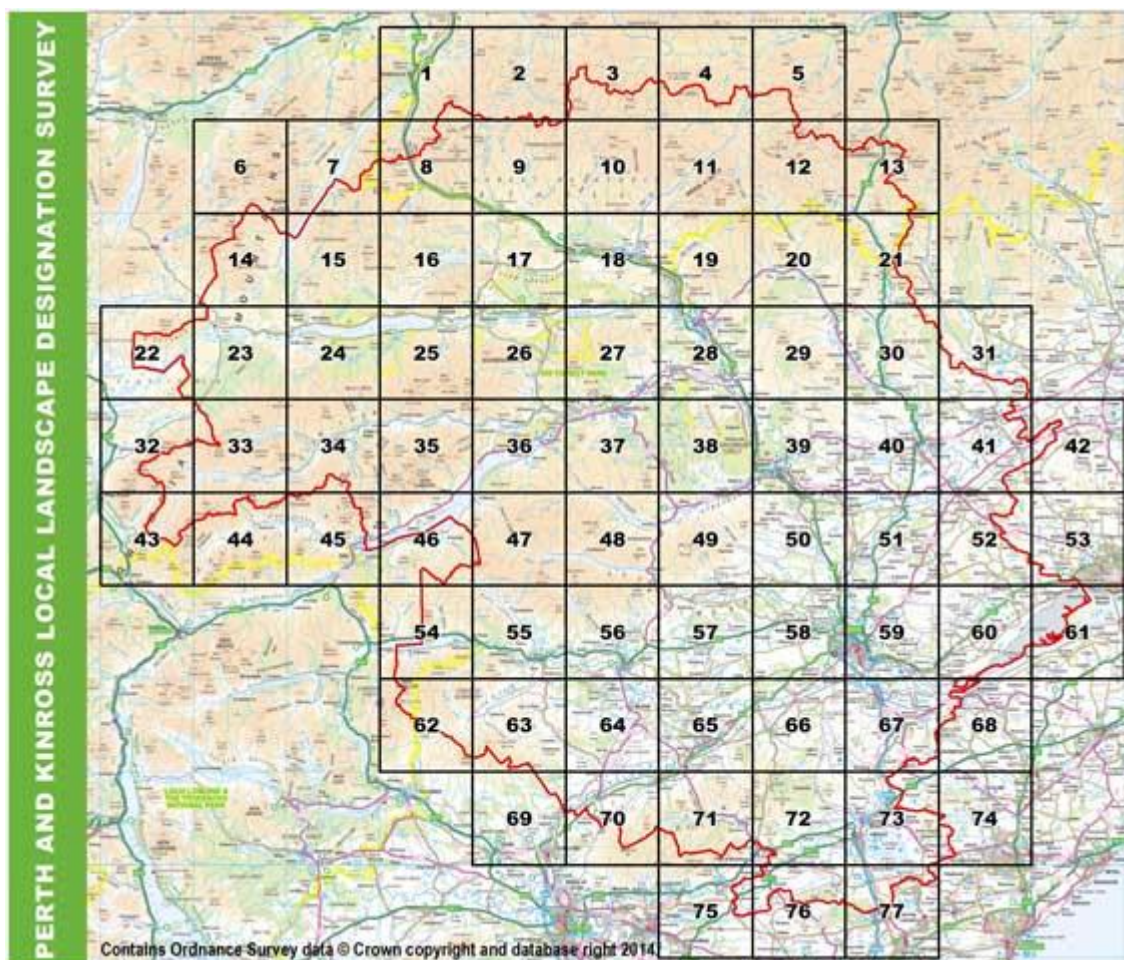
- Yes
- No

Favourite landscape 5

Please tell us about the fifth of your favourite landscapes in Perth and Kinross

17. What is the name of this landscape, area or place:

The map shows Perth and Kinross, divided into a series of grid squares. Each of these grid squares has a number (1 to 77). You can use these numbers to identify the location of each of your favourite landscapes. For areas that extend beyond one grid square, please note the number for the square at its centre. A higher quality version of the map is available at www.pkc.gov.uk/landscape.



18. In which grid square is it located?

***19. We would like to know why this is one of your favourite landscapes or places.**

Please could you indicate which of the following apply:

	Agree strongly	Agree	Neutral	Disagree	Disagree strongly	Don't know
This landscape makes a positive contribution to the wider identity, image and sense of place of Perth and Kinross	<input type="radio"/>	<input type="radio"/>	<input type="radio"/>	<input type="radio"/>	<input type="radio"/>	<input type="radio"/>
This landscape is rare or unique	<input type="radio"/>	<input type="radio"/>	<input type="radio"/>	<input type="radio"/>	<input type="radio"/>	<input type="radio"/>
This landscape is well managed and in a good state of repair	<input type="radio"/>	<input type="radio"/>	<input type="radio"/>	<input type="radio"/>	<input type="radio"/>	<input type="radio"/>
This landscape feels wild or remote	<input type="radio"/>	<input type="radio"/>	<input type="radio"/>	<input type="radio"/>	<input type="radio"/>	<input type="radio"/>
This landscape has strong scenic qualities	<input type="radio"/>	<input type="radio"/>	<input type="radio"/>	<input type="radio"/>	<input type="radio"/>	<input type="radio"/>
This landscape is important for recreation, for local people or visitors	<input type="radio"/>	<input type="radio"/>	<input type="radio"/>	<input type="radio"/>	<input type="radio"/>	<input type="radio"/>
This landscape has a strong historic character	<input type="radio"/>	<input type="radio"/>	<input type="radio"/>	<input type="radio"/>	<input type="radio"/>	<input type="radio"/>
This landscape has important cultural or spiritual associations	<input type="radio"/>	<input type="radio"/>	<input type="radio"/>	<input type="radio"/>	<input type="radio"/>	<input type="radio"/>
This landscape has important natural features and habitats	<input type="radio"/>	<input type="radio"/>	<input type="radio"/>	<input type="radio"/>	<input type="radio"/>	<input type="radio"/>
This landscape forms an important part of the setting of villages or towns	<input type="radio"/>	<input type="radio"/>	<input type="radio"/>	<input type="radio"/>	<input type="radio"/>	<input type="radio"/>
This landscape has important views, viewpoints or landmarks	<input type="radio"/>	<input type="radio"/>	<input type="radio"/>	<input type="radio"/>	<input type="radio"/>	<input type="radio"/>

If you like, in your own words, please describe why this landscape is important to you

About you

It would help us if you could provide a little information about yourself

20. Do you:

- Live in Perth and Kinross
- Work in Perth and Kinross
- Visit Perth and Kinross

Other (please specify)

21. Please could you give the first half of your postcode (e.g. PH6 or PH1):

22. Do any of the following statements apply to you?

	Yes	No
I own or manage land in Perth and Kinross	<input type="radio"/>	<input type="radio"/>
I am a member of an outdoor recreation organisation (e.g. Ramblers, Mountaineering Council of Scotland)	<input type="radio"/>	<input type="radio"/>
I am a member of a local or national heritage organisation (e.g. National Trust for Scotland, John Muir Trust)	<input type="radio"/>	<input type="radio"/>
I am a member of a community organisation in Perth and Kinross	<input type="radio"/>	<input type="radio"/>

23. Are you:

- Male
- Female

24. Are you:

- Under 18
- 18-65
- Over 65

25. Please provide an email address if you would like to be kept up to date with the review:

Your email address will only be used to provide you with updates on this project.

Thank you very much for taking the time to complete the questionnaire.