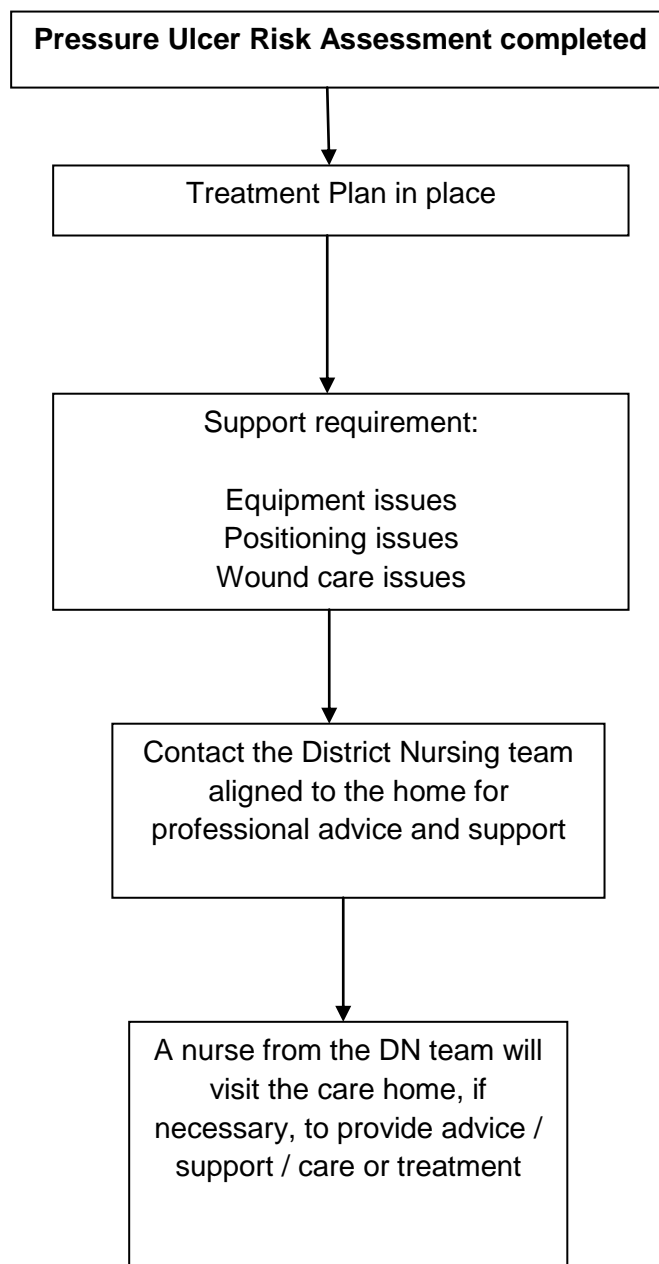




CARE HOME PRESSURE ULCER PREVENTION SUPPORT & EQUIPMENT PATHWAY

Care Home Pressure Ulcer Professional Support Pathway



The Care Homes have a Protocol (COSLA / NHS Tayside) which they follow around equipment which states that there are certain levels of equipment expected to be provided by the home. This document is embedded below. It is possible for the NHS to supplement additional equipment as stated in the protocol - especially for some of the more specialist equipment. Nursing Homes require to access the JELS store directly to access equipment and not through the DN service.



17.07.18 v1 - FINAL
VERSION Protocol for

This Protocol document contains tables highlighting what Pressure Ulcer prevention equipment the care homes can ask the NHS to supply. Examples of some of the relevant tables are added at the end of this document.

NHS Equipment Supply

The District Nursing Service follows the "Guidelines for Community Nurses for the assessment and provision of equipment"



Guidelines for
community nurses for

The aim of this guidance is to support District Nursing staff to directly access equipment to meet the needs of adults with illness or disability that are cared for by the District Nursing Service in Perth and Kinross. This guidance aims to ensure patient centred, safe and effective care to support effective planning and organisation of care services. This guidance has been created by Perth and Kinross Health and Social Care partnership (District Nursing, Joint Equipment Loan Store JELS and Occupational Therapy Services)

Timescales for Delivery

Store operating hours Mon-Friday 8.45am – 5pm

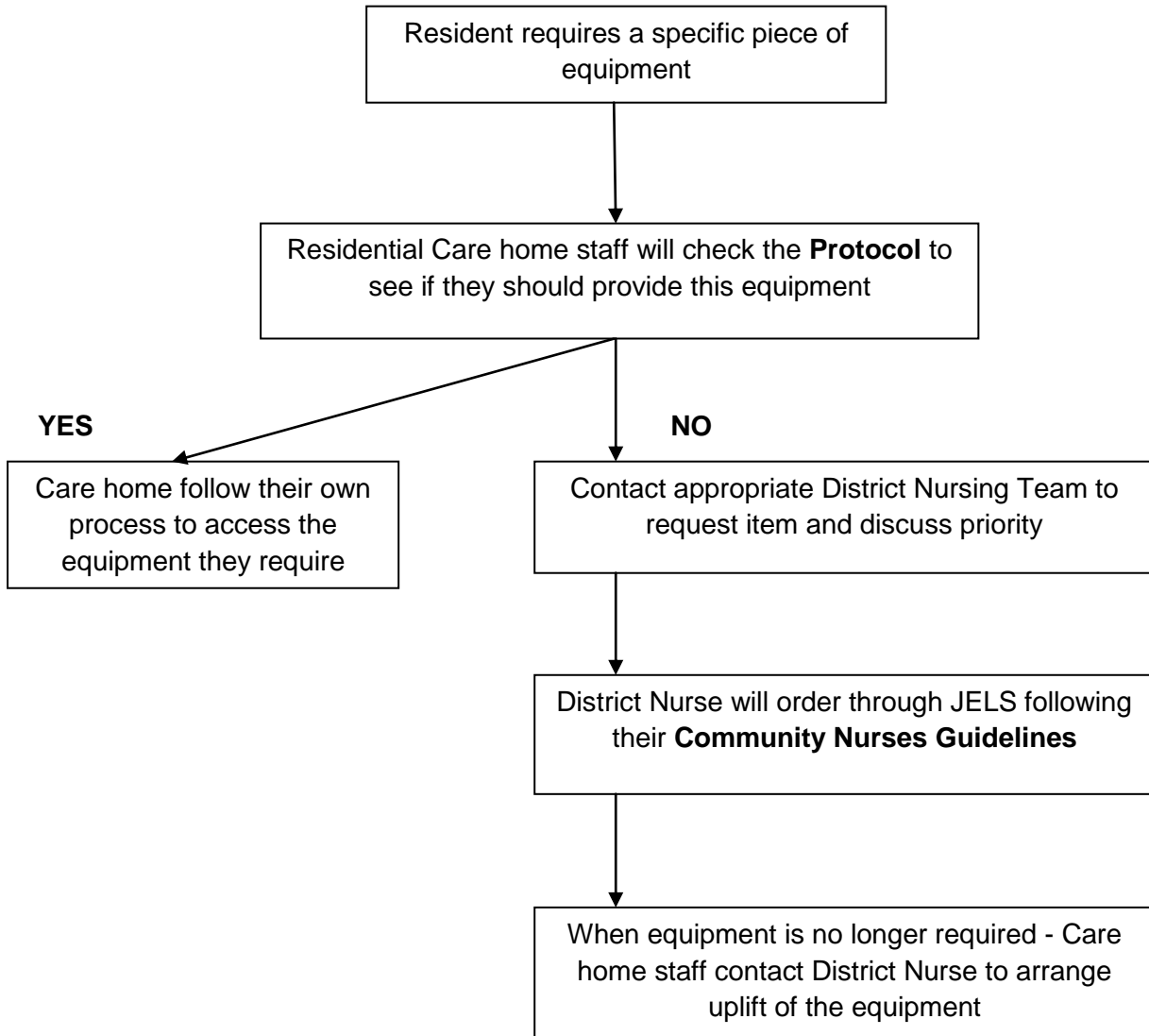
Equipment is requested under four priorities for delivery on ELMS

- Priority 1** Equipment will be delivered within 2 working days e.g. for patients with palliative care needs, pressure ulcers, hospital discharge or prevention of admission.
- Priority 2** Equipment will be delivered within 5 working days
- Priority 3** Equipment will be delivered within 10 working days. For planned discharges over 1 week. Equipment can be ordered and delivery arranged once discharge date confirmed
- Priority 4** Special order items requiring direct supplier order - up to 6 weeks. Timescales for Delivery

NHS Responsibilities in Residential Care Homes

The District Nurse will complete an assessment before each piece of equipment is ordered. Each piece of equipment is ordered against a residents name and should only be used for that person. When the equipment is no longer required the care home needs to notify the community nurse to arrange for the uplift of the equipment with the JELS store.

Equipment Request Pathway for Residential Care Homes



| Item of Equipment | Care Home Settings | | Comments |
|--|--------------------|--|--|
| | Nursing | Residential | |
| Beds | | | |
| Standard range of beds | CH | CH | Subject to Health and Safety risk-management |
| Standard hospital beds – variable height profiling | CH | See comments | Only in non-nursing settings after full risk assessment and supply via Community Nurse |
| Standard electric profiling | CH | See comments | Only in non-nursing settings after full risk assessment and supply via Community Nurse |
| Non-standard beds, e.g., for people with complex treatment and care needs. E.g. Eerton or bariatric beds | Primary Care | Primary Care | Assessment by community nurse |
| Prevention Therapy and Management of Pressure Sores | | | |
| Static Mattresses (requires no power source) | | | |
| Foam Overlay (e.g. Parkhouse Permapad) and Memory Foam Overlay (e.g. NP140 Hill Rom) | CH | CH | |
| Air Filled Overlay (e.g. Medical Frontier Repose, Roho) | CH | Primary Care Following Assessment by Community Nurse | |
| Foam Replacement (e.g. Permaflex) | CH | CH | |
| Dynamic Mattresses (requires power source) | | | |
| Overlay (e.g. Parkhouse Eclipse, Talley Quatro) | CH | Primary Care Following Assessment by Community Nurse | |
| Replacement (e.g. Nimbus Huntleigh, Parkhouse Elite) | CH | Primary Care Following Assessment by | |

| | | Community Nurse | |
|--|---------------------|---------------------|-------------------------------|
| Item of Equipment | Care Home Settings | | Comments |
| | Nursing | Residential | |
| Patient Repositioning and Transfer | | | |
| Hoists, slings, transfer boards and glide sheets | CH | CH | |
| Bariatric hoists | Primary Care | Primary Care | Assessment by Community Nurse |
| Non-standard sling | Primary Care | Primary Care | Assessment by Community nurse |
| Standing turntable | CH | Primary Care Physio | Assessment by OT/Physio |
| Standing frame | Primary Care Physio | Primary Care Physio | Assessment by Physio |

| Pressure Reducing Cushions | | | |
|---|----|--------------|---|
| Static (requires no power source) | | | |
| Foam Overlay (e.g. Propad Invacare, Permaflex low profile, Parkhouse) | CH | CH | |
| Air Filled Overlay (e.g. Repose, Medical Frontier) | CH | Primary Care | Following Assessment by Specialist Community Nurse |
| Foam Replacement (e.g. Flotech, Invacare) | CH | Primary Care | As above |
| Dynamic (requires power source) | | | |
| Replacement (e.g. Parkhouse dynamic, Hill Rom Response) | CH | Primary Care | Following Assessment by Specialist Community Nurse |
| Pressure relieving foot protectors (e.g. Repose, Medical Frontier) and elbow protectors | CH | See comments | Only after full risk assessment and Supply by Community Nurse |