

Case Study: Boathouse Toilets, Kinross

The Boathouse Toilet Block is situated within the Loch Leven National Nature Reserve in Kinross. The toilets (ladies, gents, baby changing facilities and a separate toilet available for disabled use) are open daily between April and October (9am to 9pm). The facility is run as an unattended Comfort Scheme and is therefore free of charge to access.

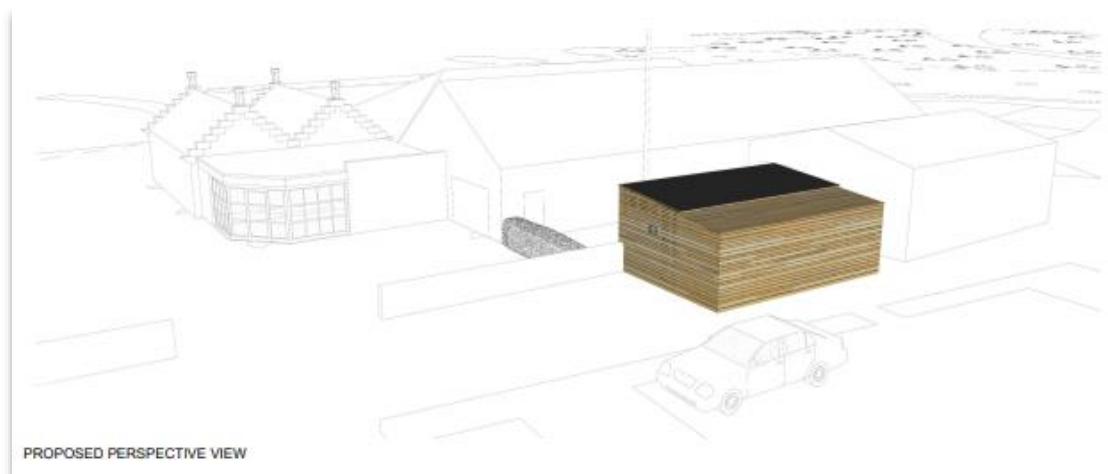


Prior to this project, there were no proper toilet facilities at the Kinross Pier and it was a considerable distance to the nearest automated toilet at Kirkgate, Kinross.

A Partnership was therefore formed between the landowner (Kinross Estates), Perth & Kinross Council (PKC), the Community Council, Scottish Natural Heritage (SNH), Historic Environment Scotland (HES) and TRACKS to

build a toilet block (*pictured, above*) on-site for people returning from walks around the Nature Reserve.

Following Planning Permission, obtaining a Building Warrant, securing funding and delivering a tender process, Portakabin (<https://www.portakabin.com/gb-en/our-buildings/toilets-showers-and-changing-facilities/>) were commissioned by the Partnership to supply a temporary toilet block on the site, linking to existing services for electricity and drainage.



This unit was clad in natural timber, to improve on the temporary look of the building and to appear as a family of visitor infrastructure around the Loch, as the cladding closely matches a recently constructed bird hide on the trail.



As a charity, Tracks was able to access funding which the other parties could not. This financial support from a local funding body, the Arthur & Margaret Thompson Trust, meant that the money could be stretched to deliver a bespoke, high quality facility.



The toilet block (*pictured above, left to right: disabled toilet, ladies' toilet, male toilets*) features electric hand dryers, automatic soap dispensers and automated, self-closing outside doors. The building outer, at an additional cost, was painted black, to allow the unit to recede behind the timber cladding. A daily cleaning schedule is in place, carried out by a local cleaning company, and the toilets are locked every night at 9pm.

The facility opened to the public for the 2019 season and, ever since opening, has received regular positive and appreciative comments from users about the quality of the build and its cleanliness.

When Covid-19 occurred in 2020, the Partnership made a few changes to the toilet facilities to help keep users safe: the automated doors were kept open to allow the air to flow freely through the area, one of the urinals was closed off to give more distance between users and (although not Government advice) the hand dryers were switched off. In addition, only one family is permitted to access the toilet block at any one time. People queue in the courtyard, which is a safe area to wait, until the toilets are available. Even with these restrictions, lockdown meant that the Nature Reserve and public toilets had to be closed for half of the season.

George Lawrie of Tracks notes, 'Our toilets are well used, good quality facilities and – even during Covid-19 - there is good visitor management. These are very much the right facilities at the right location for the visitors to the Loch Leven National Nature Reserve and its on-site restaurant.'

The annual budget for running the toilets is divided between PKC, SNH and HES. In addition, there is a small budget for repairs and maintenance. A signed Memorandum of Understanding is in place between the parties in the Partnership.

If your community group is looking to deliver a similar public toilet project and would like to hear hints, tips and lessons learnt from the Boathouse Toilets project, please contact developmentandcommunity@HES.scot

For details about public toilets and comfort schemes across Perth and Kinross, please visit www.pkc.gov.uk/publictoilets and www.pkc.gov.uk/wcmap