



Education and Learning
Improving Lives Together
Ambition | Compassion | Integrity



NEWSLETTER

ELC Newsletter, Issue 35, October 2024

Contents

Update on the quality framework for early learning and childcare sectors

Receive Tax-Free Childcare payments

Christmas Hampers

Training

Training Offer

Early Learning & Childcare In-Service Day Training

Developing Global Citizenship through Play at Early Level - CLPL opportunity for all

Paediatric First Aid Training

Solihull Approach Foundation Training

SSSC

Qualifications for registration

Keeping your registration up to date. Have you changed details?

Care Inspectorate

Registering and running a childminding service: what you need to know

Setting the Table: Nutritional standards and practical guidance for early learning and childcare providers in Scotland

Scottish Covid-19 inquiry wants to hear from you

Parenting & Family Learning

Baby Incredible Years

Update on the quality framework for early learning and childcare sectors



Joint statement from the Care Inspectorate and Education Scotland on early learning and childcare inspections and the progress towards the delivery of the new Quality Improvement Framework for the early learning and childcare sectors.

Education Scotland are pleased to share some important updates on the development of the new quality improvement framework for the early learning and childcare sectors.

Over the past months, Education Scotland have been working to develop a framework that will support continuous improvement in the quality of early learning and childcare. The framework will be used by the Care Inspectorate and Education Scotland when carrying out inspections from September 2025.

Education Scotland are grateful to all those who have contributed to its development and to our stakeholder reference group for their work in developing the framework. They want to make sure the framework is a valuable tool for everyone in the sector.

To ensure that colleagues across the sector are familiar with the framework, they are launching a series of engagement sessions throughout November 2024.

[Read more](#)

Receive Tax-Free Childcare payments

**Childcare provider?
Register with a
childcare regulator to
attract more families.**

Find out more. Go to
childcarechoices.gov.uk

Eligibility criteria apply



Childcare
Choices

[Learn about Tax-Free Childcare](#)

[back to top](#)

Christmas Hampers

Its approaching that time of year again where family expenses are being stretched even further than they currently are. The Family Christmas Hamper project is being supported by a number of local organisations this year, this will enable us to support more families across the whole of Perth and Kinross, who are most in need of this little extra support to help make this time of year more manageable and enjoyable.

The number of hampers we have available is limited to only 350 so early completion of the application form is advisable.

Applications must be completed by a professional.

Due to the limited numbers of available, Christmas Hampers should only be requested for families we feel are most in need.

Families must meet at least one of the criteria listed below:

- Children from lone parent families
- Children from ethnic minority groups
- Children from families with a disabled adult or child
- Children from families with a young Parent/Carer (under 25)
- Children from larger families (3+ children)

- Children from low-income families
- Care experienced children and young people.
- Young Carers
- Children in need of protection

The hampers will consist of:

- Non-perishable food items e.g. cereal, pasta tinned fruit and veg
- A family board game
- Boxes of sweets/biscuits
- Please ensure that application has been discussed and approval given from each family before submitting.

Christmas Hamper Application

Deadline for Applications is the Monday 18th November at 12noon.

back to top



Training Offer

Training Offer 2024

remember to visit www.ecslearninghub.org.uk for more listings

[See all](#)

+ Add event

 OCT 31	Pre Registration for Childminding Thu, 31 Oct, 09:30	 OCT 31	Pre Registration for Childminding Thu, 31 Oct, 18:30	 NOV 4	Child Protection Officer Training Mon, 4 Nov, 09:30	 NOV 5	Digibyte: Translation Tools Tue, 5 Nov, 16:00
 NOV 7	Introduction to Leadership and Management Thu, 7 Nov, 18:30	 NOV 12	Introduction to Child Development Tue, 12 Nov, 18:30	 NOV 15	Early Learning & Childcare In-Service Day Training Fri, 15 Nov, 08:30	 NOV 18	Selective Mutism (Pre-School Sector) Collaborative Mon, 18 Nov, 15:30
 NOV 21	0-3 Being Me in PKC Thu, 21 Nov, 11:30	 NOV 21	Child Protection Basic Awareness Thu, 21 Nov, 18:30	 NOV 25	Exploring GIRFEC and UNCRC Mon, 25 Nov, 18:30	 NOV 26	Supporting the Learning and Development of Boys in the Tue, 26 Nov, 18:00
 NOV 29	Supporting the Learning and Development of Boys in the Fri, 29 Nov, 09:30	 DEC 5	Practical Workshop on using CIRCLE Up, Up, and Away Thu, 5 Dec, 16:00	 DEC 10	Supply ECP, PA and EYPSA Network Tue, 10 Dec, 16:30	 FEB 20	Digital Literacy in ELC Improvement Programme Thu, 20 Feb, 09:30

Book now

back to top

Early Learning & Childcare In-Service Day Training

We invite practitioners from local authority and funded provider settings along to share in some key messages which will support us all to deliver high quality early learning and childcare to our children. Throughout the day, you will have opportunities to share your experiences with colleagues, hear what is being delivered across Scotland.

There are a selection of workshops for you to attend, and you can choose 4 across the day

[Book now](#)

[back to top](#)

Developing Global Citizenship through Play at Early Level - CLPL opportunity for all



This course is for any practitioner working with children at Early Level CfE (age 3-6) in a nursery setting or P1/composite class in Scotland. The course will explore:

- What we mean by Global Citizenship and what that looks like at Early Level
- How we can adjust experiences, interactions and spaces to support young children to develop the knowledge, skills, values and attitudes of Global Citizenship
- Provocations, strategies and resources available to support your practice

Mon 11 Nov 2024 at 16:30

The course will take place on Google Meet and the link will be emailed out a few days before the event.

[Book now](#)

[back to top](#)

Paediatric First Aid Training

PKC offers First Aid Training at no charge for all funded provider ELC settings including childminders.

[Evening Courses Booking
Calendar](#)

[Saturdays and Weekdays Booking
Calendar](#)

The course title is **Emergency First Aid at Work (including Emergency Paediatric First Aid)** and is delivered by the PKC Corporate Health & Safety Team. There are several options offered each term, with a choice of a full day session or evening sessions, during the week, and also one Saturday session offered per term to provide convenience out with normal working hours.

Although there are no set guidelines for renewal of first aid certification, the Care Inspectorate advises that “it is good practice for staff to receive paediatric first aid training on a regular basis”.

Links to the Health and Social Care Standards:

1.24 Any treatment or intervention that I experience is safe and effective.

3.14 I have confidence in people because they are trained, competent and skilled, are able to reflect on their practice and follow their professional and organisational codes.

4.11 I experience high quality care and support based on relevant evidence, guidance and best practice.

4.14 My care and support is provided in a planned and safe way, including if there is an emergency or unexpected event.

[back to top](#)

Solihull Approach Foundation training

The Solihull Approach is a framework which helps provide a practical way of working with and supporting families. It aims to increase the emotional health and wellbeing of children and their families, ensuring children have a good emotional start in life whilst supporting parents in a creative and consistent approach. The Solihull Approach helps parents process their own emotions and anxieties allowing them to cope and focus more clearly on how to assist their children's emotions, anxieties and behaviours.

- 3 hour e-learning, this should be completed before attending the first session, this can be completed in segments.
- Session 1 – 3rd December 2024 - 9.30-16.30 in person session, Perth Grammar School
- 1 hour learning to be completed before session 2.
- Session 2 – 11th December 2024 - 18.00-21.00 virtual MS Teams

Aims:

1. to introduce practitioners to the Solihull Approach model as applied to working with babies, young children, young people and their families.
2. to introduce practitioners to the developmental effects of childhood trauma in relation to working with children and their families.
3. to introduce a model for understanding the impact of relationships on health and wellbeing and the impact of adverse childhood experiences on health and wellbeing.

Outcomes:

1. Practitioners will be more confident to support children, young people and their families.
2. Practitioners will be more aware of the impact of trauma.
3. Practitioners will have an effective and consistent approach across agencies as a shared framework.

[Book now](#)

[back to top](#)



Qualifications for registration

Did you know that since the Register changes in June, SSSC take a more flexible approach to qualifications for registration to allow people to move between children and young people services and social care without having to gain two different qualifications?

The standard qualification for workers in children's services is the SVQ Social Services (Children and Young People) and for workers in adult services it's the SVQ Social Services and Healthcare. SSSC now accept either of these qualifications for registrants working in both adult and children's services.

SSSC will ask registrants moving to another type of service to complete some extra learning, for example child or adult protection, as part of their CPL rather than doing another qualification.

[Find out more...](#)

[back to top](#)

Keeping your registration up to date Have you changed details?

You can tell SSSC about changes to your personal, employment, health or qualification details at any time using your MySSSC account.

They need to know as soon as possible if there are changes to:

- home address
- phone number
- email address
- criminal convictions or disciplinary matters
- health matters that impact you being able to carry out your job
- employment – starting or leaving a job, change of employer or job role

- gaining a qualification relevant to your registration condition.

Are you a supervisor or manager?

Please encourage your staff to review their details on their MySSSC account to make sure they're up to date.

[Sign in to your MySSSC account...](#)

[back to top](#)



Registering and running a childminding service: what you need to know

This [booklet](#) is designed to help you if you are applying to register a childminding service or you are already running a childminding service.

It explains the requirements of the Care Inspectorate so that you can make sure you meet them before you register your service. It also provides you with information that will help you when running your service and what to expect when you are inspected.



[Read more](#)

[back to top](#)

Setting the Table: Nutritional standards and practical guidance for early learning and childcare providers in Scotland



Updated **Setting the Table** was published on 8 October 2024. It aims to ensure that children from birth to 5 years in childcare settings across Scotland are given meals, snacks and drinks that meet their nutritional requirements and are conducive to good health.

[Read more](#)

All regulated childcare providers in Scotland are expected to implement this guidance by August 2025. This is to provide time for settings to familiarise themselves with its contents and make changes where necessary.

The central team will review the document and update settings with key changes that are due to be implemented ahead of August 2025.

[back to top](#)

Scottish Covid-19 inquiry wants to hear from you

The Scottish Covid-19 Inquiry is inviting people across Scotland to share their experiences of the pandemic, and any lessons they believe should be learned, to inform its investigations and recommendations.

The Inquiry is calling on **everyone who was in Scotland between 1 January 2020 to 31 December 2022 or was affected by decisions made in Scotland during this time**, to contribute to Let's Be Heard, its public participation project.

Let's Be Heard is the main way in which people can contribute to the Inquiry's investigations. Having completed its national engagement phase, the team is now in focused engagement. This involves taking a more targeted approach to examining the pandemic's impact on communities across Scotland, through conversations and focus groups.

During its focused engagement phase, Let's Be Heard is seeking the views of **children, teenagers, teachers, and early learning and childcare professionals**. To gather experiences from these groups, the project has launched three surveys:

1. **Professionals in any early learning and childcare settings (closes Friday 29 November 2024)**
2. **Primary, secondary and additional support needs (ASN) teachers, school management and/or educational support professionals in state and independent schools (closes Friday 29 November 2024)**; and
3. **Children and young people aged 8 years and older (closes Friday 29 November 2024)**.

Sharing your experiences will help the Inquiry identify and better understand any unequal impacts the pandemic had on particular groups or communities. Your experiences will also help inform the Inquiry's investigations and the recommendations it makes to Scottish

Ministers. You can take part via the [Let's Be Heard website](#) and the surveys should take around 15 minutes to complete.

Printed versions of the surveys, including in different languages and accessible formats, are also available on the Let's Be Heard website, or can be requested using the details below.

Let's Be Heard is grateful to everyone who has participated and is now analysing every experience shared.

If you have any questions, you can contact the team by:

- emailing LetsBeHeard@covid19inquiry.scot;
- leaving a voicemail at 0808 175 5555; or
- writing to Freepost SCOTTISH COVID-19 INQUIRY.

[back to top](#)



Baby Incredible Years

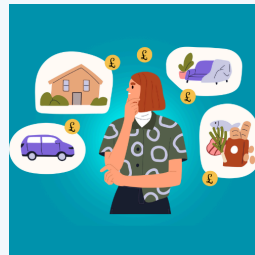
The Incredible Years® Parents and Babies Programme is a group-based prevention programme for parents of babies ages 0-12 months. This universal programme is delivered to parents in 12 weekly 2-hour sessions starting when their babies are 4-6 weeks of age.

The programme is guided by cognitive social learning theory, child development and relationship building principles. Using video vignettes, observational and experiential learning and reflective methods, the programme encourages parents to promote optimal baby development by means of physical, tactile, auditory and visual stimulation, to speak “parentese” and read to their baby, to nurture their parent-baby relationship, to help them understand their babies developmental milestones, to cope with their babies’ crying and learn strategies to stay calm and baby-proof their home. Parents have opportunities to practice responsive interactions with their babies frequently within the group with group leader feedback.

Research has found attendance at group is associated with improved parenting confidence, reduced stress and improved parental mental health.

[Apply now](#)

[back to top](#)



Struggling with the cost of living?

You received this email because you have subscribed to email updates from Perth and Kinross Council.

[Update your preferences or unsubscribe here](#)



Comhairle Pheairt
is Cheann Rois



Perth and Kinross Council

2 High Street, PH1 5PH, Perth