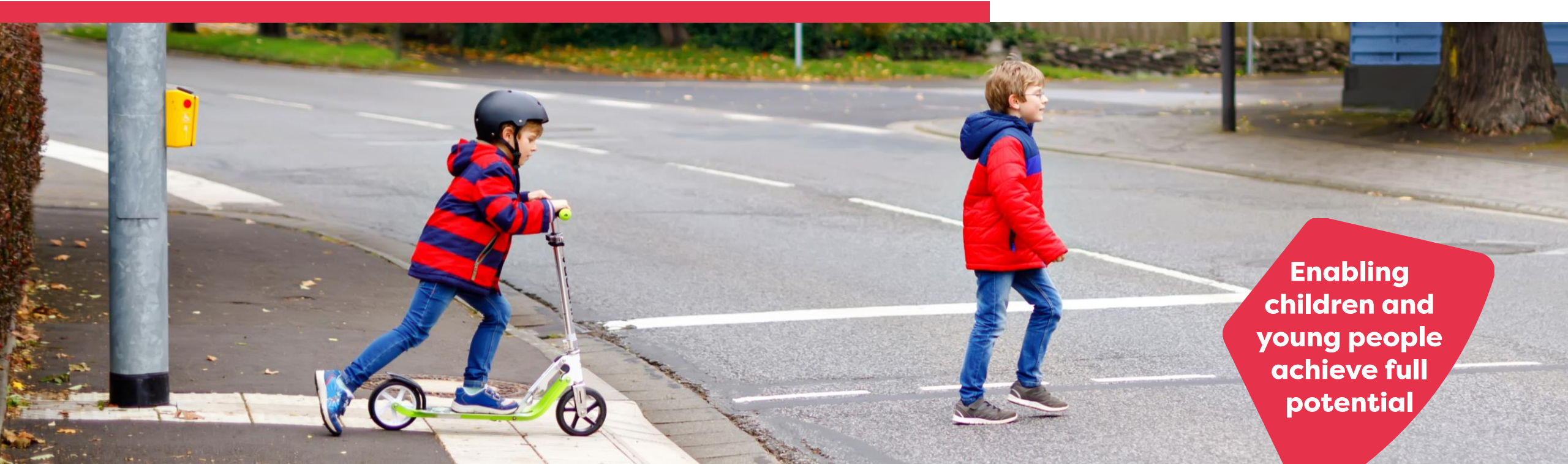


# Statutory Consultation

## Intensive Support Provisions (ISPs)



**Enabling  
children and  
young people  
achieve full  
potential**

# Agenda

---

- Welcome and Introductions
- The Proposal
  - Support for learning and additional support needs
  - What is an ISP
  - Educational benefits
- Statutory consultation process
- Questions



# Panel / Introduction

---

<b>David Macluskey</b>	Education & Learning – Strategic Lead (Chief Education Officer)
<b>Barry Donald-Hewitt</b>	Head Teacher Viewlands Primary School
<b>Fiona MacKay</b>	Service Manager Inclusion and Additional Support
<b>Sarah Stephen</b>	Quality Improvement Officer (QIO) Inclusion
<b>Karen Robertson</b>	Service Manager, Business Services

# The Proposal

---

This meeting provides information on the following proposal:

That subject to the outcome of this consultation exercise, the Council proposes to: Permanently establish a new Intensive Support Provision at Viewlands Primary School for pupils with Additional Support Needs with effect from January 2026.

# Background: PKC Vision

---

Our vision is for a Perth and Kinross where everyone can live life well, free from poverty and inequality.

Our Corporate Plan aims to ensure that children and young people grow up safe, respected, well-educated and confident in their ability to realise their full potential.



# Statutory Duties of a local authority

---



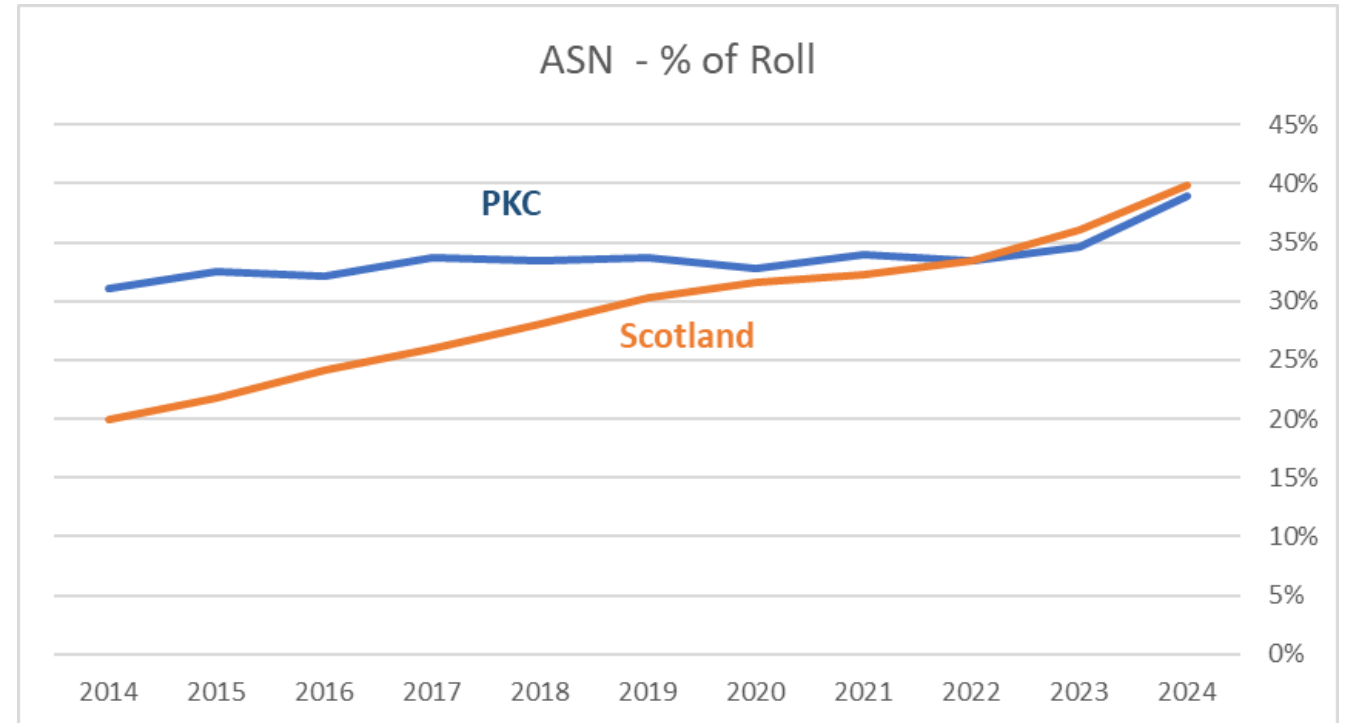
Education (Additional Support for Learning) (Scotland) Act 2004, amended 2009 created the term 'additional support needs' and places duties on local authorities to identify, meet and keep under review the needs of pupils for whom they are responsible.

# Background

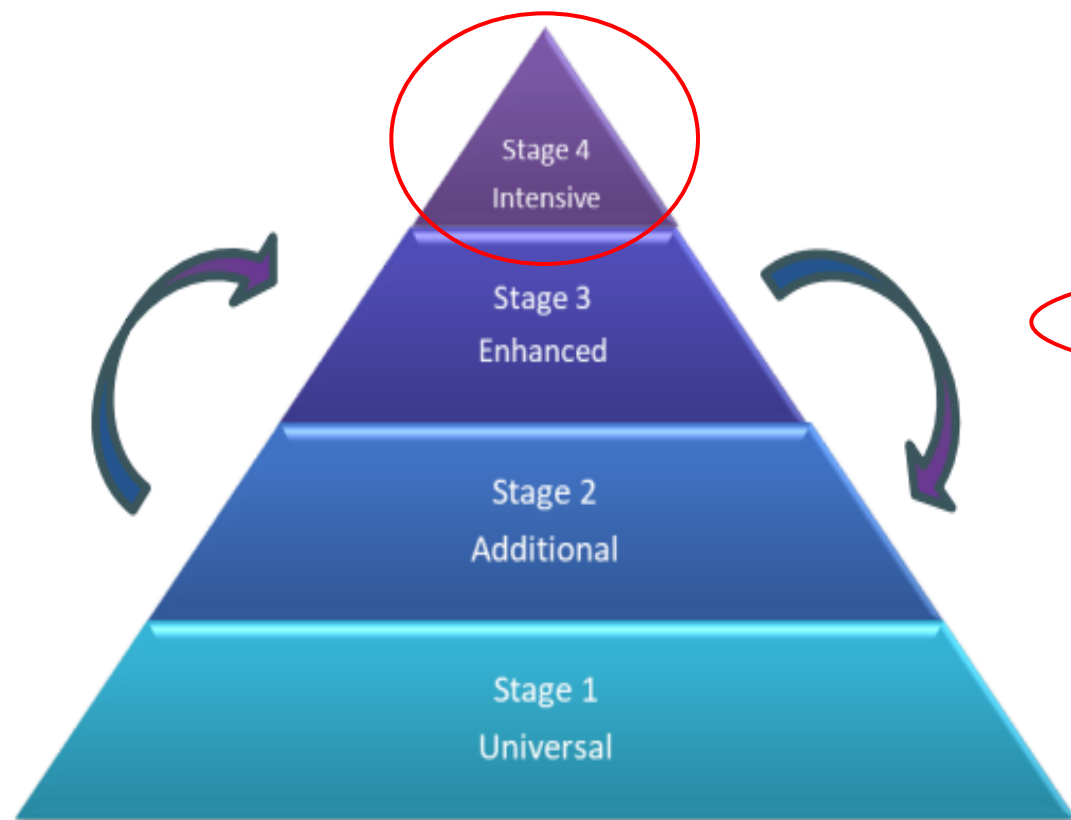
Annual increase of pupils recorded with additional support needs

Existing Intensive Support Provisions (ISPs) regularly at or over capacity

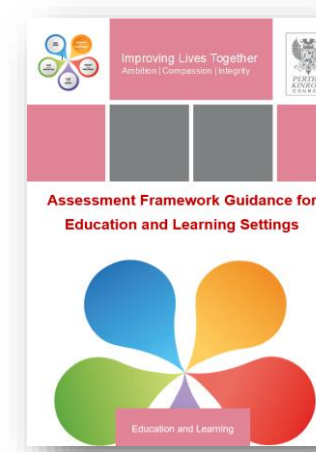
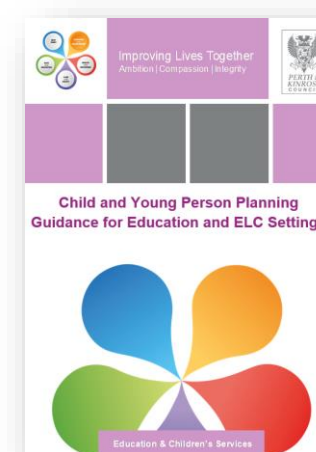
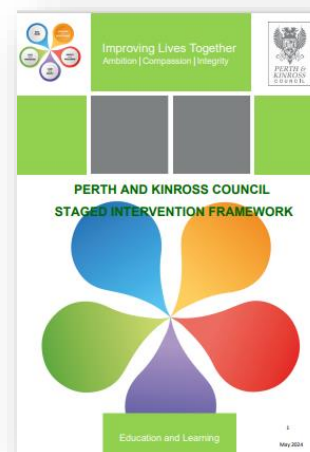
29 January 2025, Learning and Families Committee approved the options appraisal committee report to extend ISPs (Report 25/19 refers)



# Support for Learning – staged levels



Stage 1	Universal	Identification of needs and classroom-based interventions
Stage 2	Additional	Assessment, planning, approaches and interventions by school-based staff
Stage 3	Enhanced	Assessment, planning and interventions, including targeted services and partner agencies
Stage 4	Intensive	Assessment, planning and delivery of education out with a mainstream setting





# Current schools with ISPs

---

## **Primary Provision**

Coupar Angus

Crieff

Errol

Inch View

Oakbank

RDM

Riverside

Tulloch

## **Secondary Provision**

Bertha Park

Blairstown High

Crieff High

Perth Academy

Perth Grammar

## **All-through Provision**

Breadalbane

# Need for a VPS Intensive Support Provision

---

- Children and young people with the most complex and multiple needs require to access special education
- Currently there are 27 children in a Perth Academy catchment Primary ISP
- 5 different ISPs; only 1 ISP is in Perth Academy catchment
- A second primary ISP for the secondary catchment schools will help to meet increasing demand
- And will enable more of children to attend a school in catchment for the same secondary school as their sister, brother, neighbour or friend who lives near them

# What is an Intensive Support Provision?

---

- A specialist educational setting that provides education through a small group approach, a bespoke environment, and a high staffing ratio.
- The curriculum is highly flexible and responsive to individual needs, focusing on key areas such as Language & Communication, Self Awareness & Regulation, Independent Skills, Literacy & Numeracy and wider curricular areas.
- Works closely with key partners such as Speech and Language Therapists (SaLT), Occupational Therapists (OT) and social work.
- Supports enhanced and bespoke transitions such as ELC to P1 and then P7 to S1 transition support.

# Profile of needs commonly supported in an ISP

---

Children and young people with a combination of:

- ✓ Cognitive difficulties leading to significant curricular adaptations required, often with a focus on life skills
- ✓ High levels of sensory sensitivities requiring a low stimulus environment
- ✓ High levels of support needed for language, communication and social skills development

# How are young people's needs met?

## Sway providing examples of staged level intervention



### What support needs are targeted?

Significant and complex support needs which require a high level of individual planning, care and support. Most likely this will include significant learning disabilities, and/or physical health needs.



### How are support needs met?

Alongside children, young people and their families, a range of professionals have collected evidence and have carefully explored what is needed. Through a transition panel, it has been agreed that highly individualised planning and delivery of education within a specialist provision/school would best meet the learners needs.



## Intensive



### What is the intended outcome?

The learning provision is tailored to each child's needs and is guided by the Curriculum for Excellence. A tailored curriculum provides opportunities to develop life skills alongside academic skills, to enable children and young people to achieve their full potential.

### Who is involved?

At intensive level, professionals from health, social care, and education work collaboratively alongside children, young people and their families. There are different opportunities for children and young people to continue to connect and engage with their mainstream peers.





\_\_\_\_\_



# What will the ISP include?

---

- ASN Classroom 1 – 52.8m<sup>2</sup>
- ASN Classroom 2 – 52.8m<sup>2</sup>
- Sensory room – 13.4m<sup>2</sup>
- Lifeskills room – shared with the school
- Personal care room – shared with the school – 10.4m<sup>2</sup>
- Outdoor area for young people accessing the ISP

The ISP at Viewlands Primary School will accommodate up to 16 pupils with multiple and complex additional support needs.

# Educational Benefits – the ISP will provide young people with:

---

- access to appropriate education closer to home.
- access to the same school as peers within their secondary school catchment
- access to social and community experiences through their school that help to build stronger community connections within the local community.
- a more efficient and supportive learning experience by reducing the distance travelled to school.

# Benefits for Parents

---

Easier for parents to engage and access their child's school so they can:

- Have an active role in supporting their child's learning
- Attend a parent contact or planning meeting at their child's school
- Collect their child if they are ill
- Participate in school activities.

# Statutory Consultation Process

---

- Legal Framework
- Consideration by Learning and Families Committee
- Proposal Paper including Educational Benefits Statement
- Statutory Consultation Period
- Representations from interested parties
- Involvement of Education Scotland
- Preparation of Consultation Report
- Decision by Learning and Families Committee



# More information is available on the [PKC website](#)

## Welcome to Perth and Kinross Council


[Home](#) / [Schools and learning](#) / [School estate reviews](#) / [Current consultations](#)

Current consultations

Proposal and Consultation for an Intensive Support Provision at Perth High School

Proposal and Consultation for an Intensive Support Provision at Kinross High School

Proposal and Consultation to formally close the original site of City




### Proposal and Consultation for an Intensive Support Provision at Viewlands Primary School

The Learning and Families Committee on Wednesday 2 April 2025 approved [Report 25/72](#) which proposed to establish a new Intensive Support Provision (ISP) in Viewlands Primary School. This report presented an [Options Appraisal](#) following an assessment of building capacity.

A short video is available which summarises the purpose of the ISP Statutory Consultation and can be viewed here:

## Perth and Kinross Council Intensive Support Provision Statutory Consultation



PKC Chat

A Perth and Kinross where everyone can live life well, free from poverty and inequality



# Questions



# **Thank you for coming to this consultation meeting**